

BOSS PS-2

SERVICE NOTES

First Edition

SPECIFICATIONS

- Power Source** : 9V DC (Battery 6F22 × 1, AC Adapter PSA series or RPW-7)
- Current Draw** : 60mA @ 9V DC
- Pitch Shift** : -1 to +1 octave
- Delay Time** : 30ms to 2s
- Frequency Response** : [Direct] 10Hz to 100kHz (±3 dB)
[Effect] 80Hz to 6KHz (±3 dB)
- Residual Noise** : Less than -90 dBm (IHF-A)
- Input Impedance** : 1MΩ
- Output Load Impedance** : More than 10kΩ
- Dimensions** : 70 (W) × 55 (H) 125 (D) mm
2-3/4 (W) × 2-3/16 (H) × 4-15/16 (D) in.
- Weight** : 450g/1lb

ADJUSTMENT

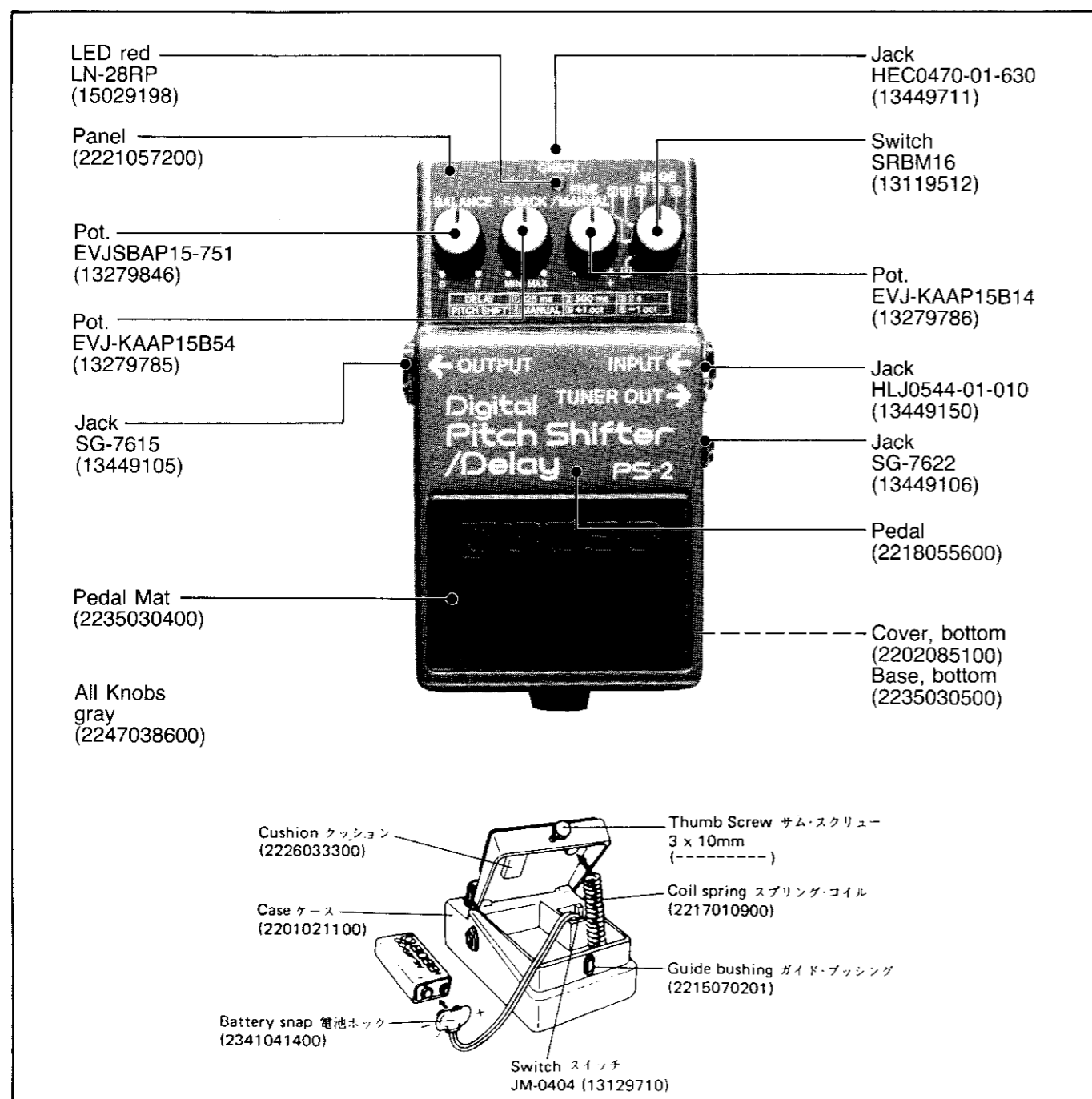
1 CLOCK FREQUENCY (VR5, VR4)

- 1-1 Connect a tuner (TU-12, TU-100 etc) or a frequency counter to TUNER OUT jack.
- 1-2 Turn MODE to [4].
- 1-3 Turn FINE/MANUAL full clockwise and adjust VR5 for C# (277.18Hz).
- 1-4 Turn FINE/MANUAL full counterclockwise and adjust VR4 for B (61.735Hz).

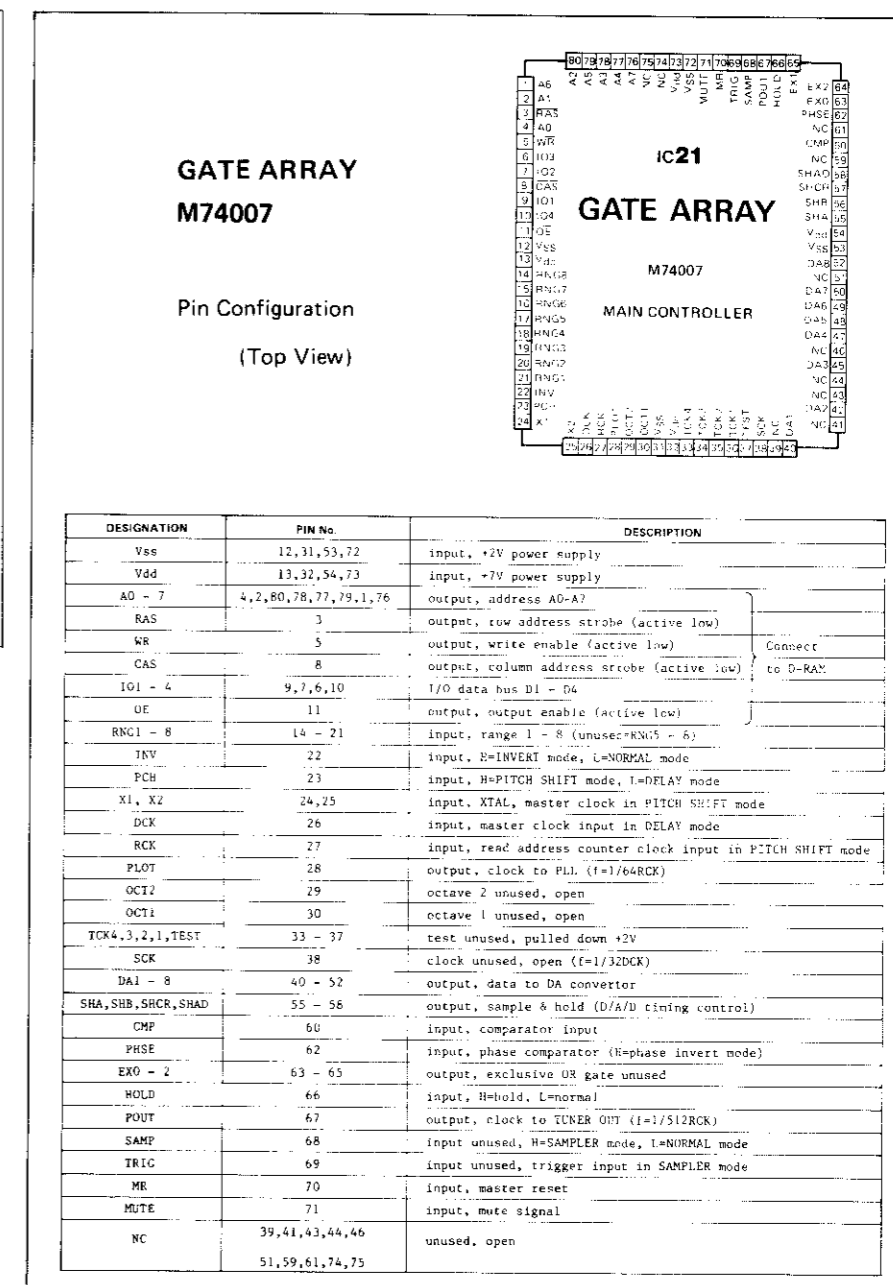
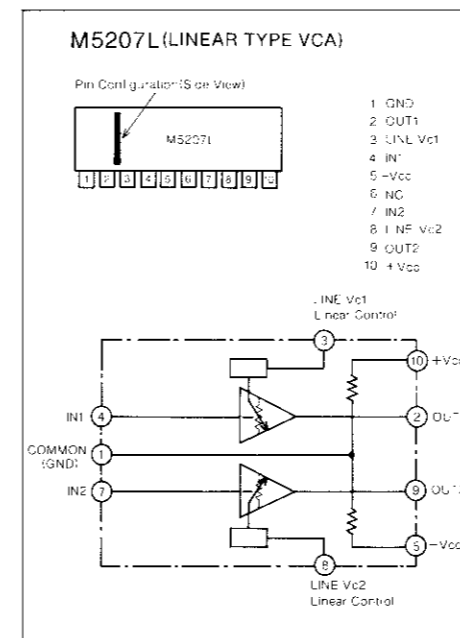
調整仕様

1. クロック調整(VR5, VR4)

- 1-1 TUNER OUTジャックにチューナー(TU-12, TU-100など)か周波数カウンターを接続する。
- 1-2 MODEを[4]にする。
- 1-3 FINE/MANUALを右(↷)に回しきってチューナーか周波数カウンターの表示がC#(277.18Hz)になる様にVR5を調整する。
- 1-4 FINE/MANUALを左(↶)に回しきってチューナーか周波数カウンターの表示がB(61.735Hz)になる様にVR4を調整する。

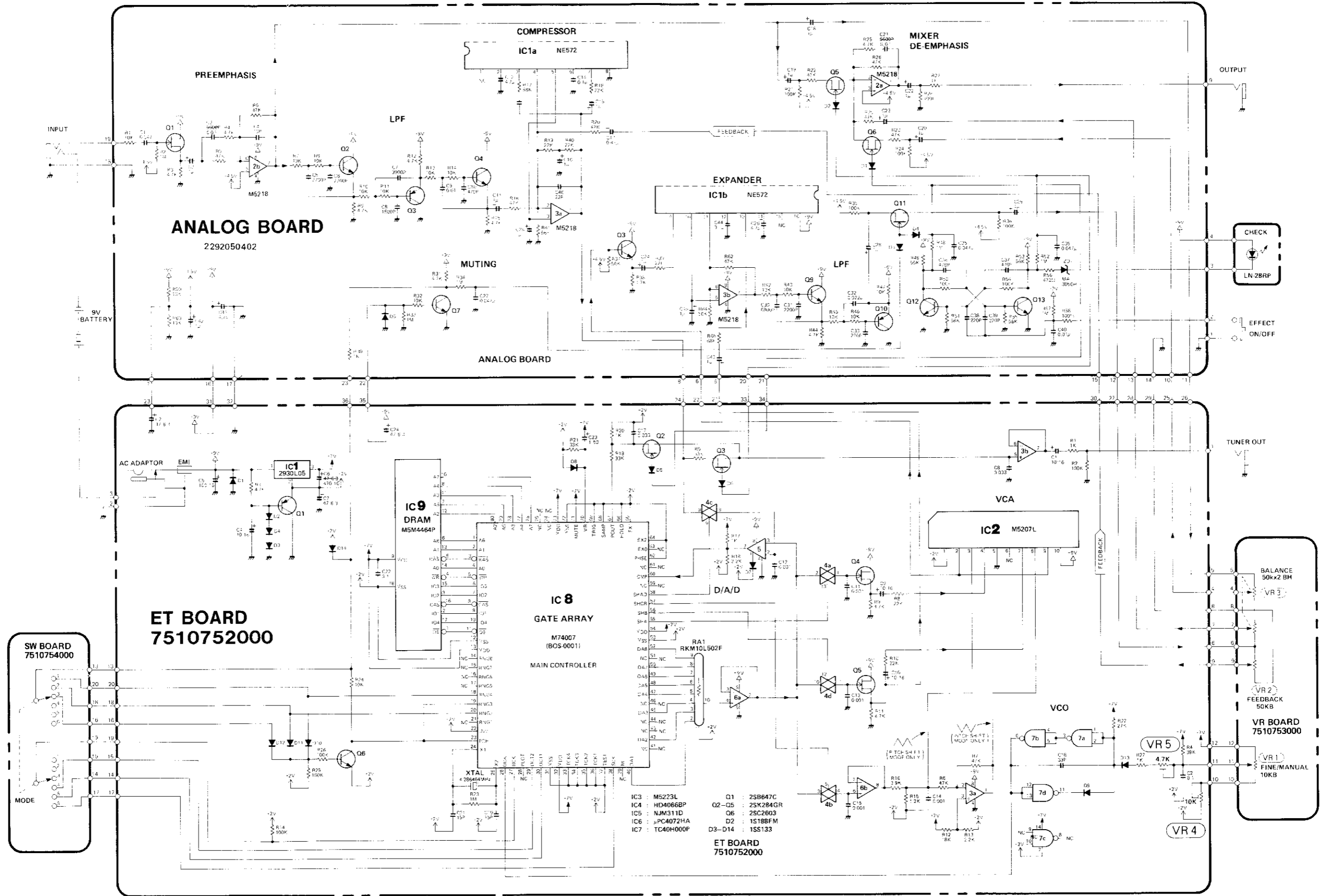


IC DATA



1 2 3 4 5 6 7 8 9 10 11 12 13 14 15 16 17 18 19 20 21 22 23 24 25 26 27 28 29 30 31 32 33 34 35 36 37

CIRCUIT DIAGRAM



A
B
C
D
E
F
G
H
I
J
K
L
M
N
O
P
Q
R
S
T
U
V
W
X
Y
Z

1 2 3 4 5 6 7 8 9 10 11 12 13 14 15 16 17 18 19 20 21 22 23 24 25 26 27 28 29 30 31 32 33 34 35 36 37 38

A
B
C
D
E
F
G
H
I
J
K
L
M
N
O
P
Q
R
S
T
U
V
W
X
Y
Z

ET BOARD

ASSY 7510752000
(pcb 2292051100)

SW BOARD

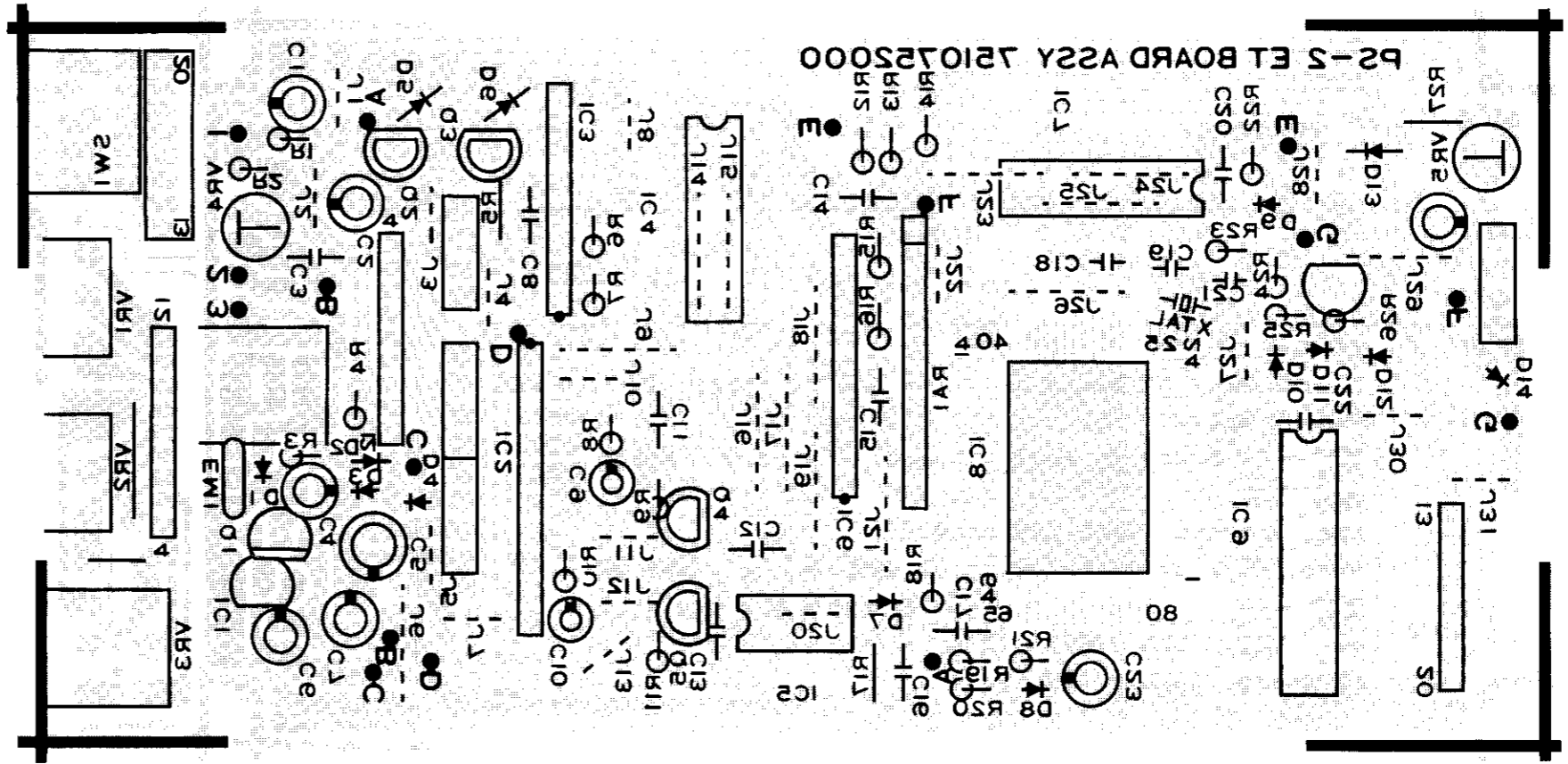
ASSY 7510754000
(pcb 2292051100)

VR BOARD

ASSY 7510753000
(pcb 2292051100)

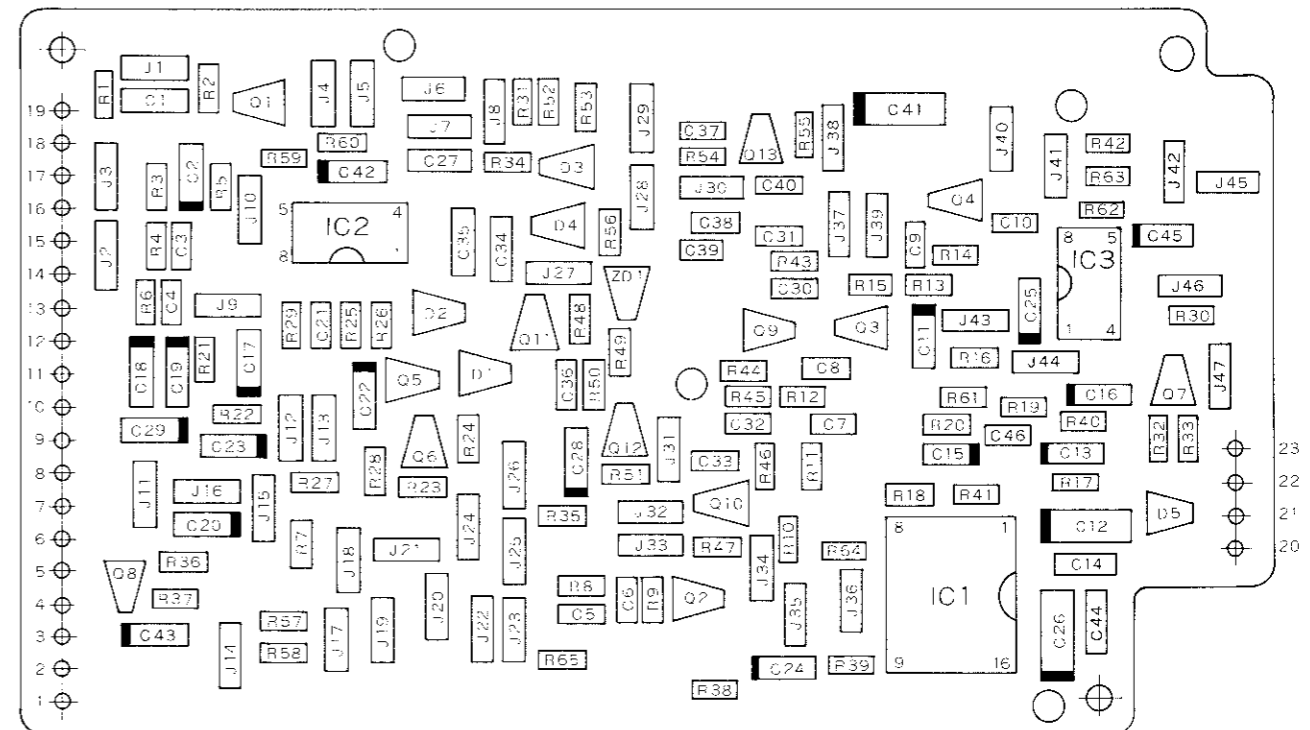
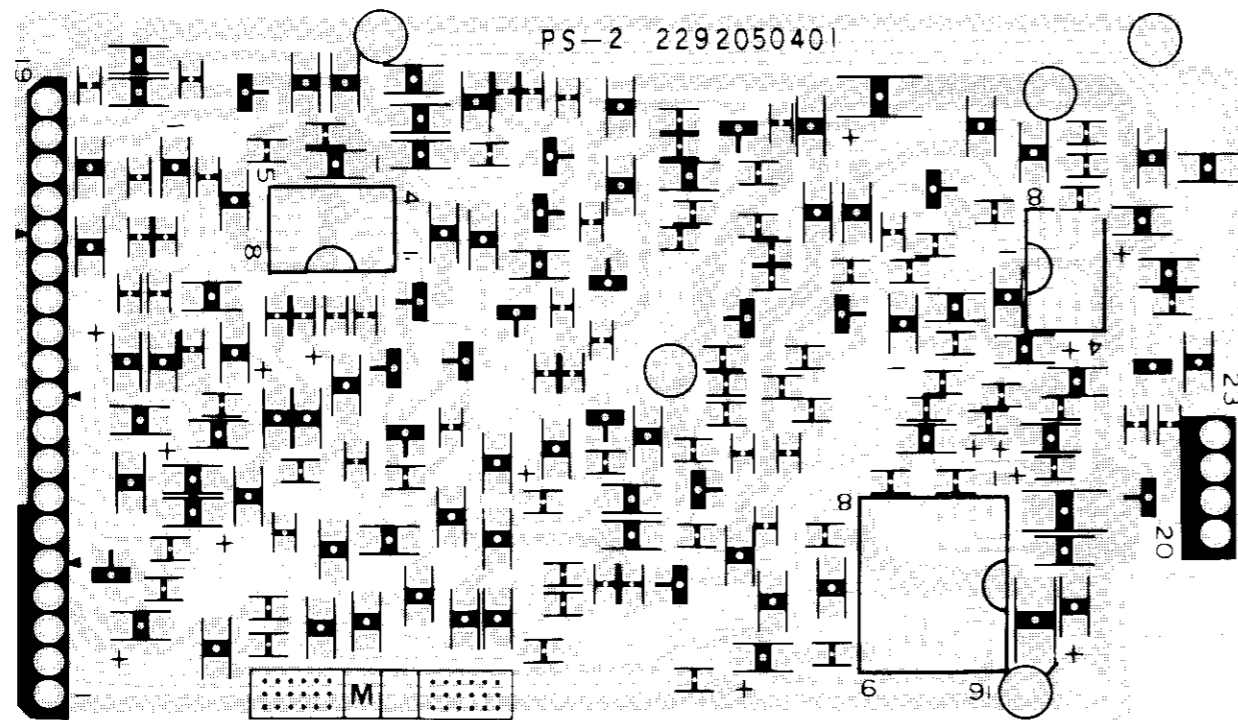
NOTE: ET BOARD (which includes SW BOARD and VR BOARD) and ANALOG BOARD are soldered together and adjusted before shipping.

注意: ET BOARD(SW BOARDとVR BOARDを含む)とANALOG BOARDはハンダ付けされ調整された状態で供給されます。



ANALOG BOARD

ASSY 7510756000
(pcb 2292050402)



PARTS LIST**CASING**

2201021100	Case
2221057200	Panel
2202085100	Cover
2235030500	Base
2218055600	Pedal
2235030400	Pedal Mat

KNOB

2247038600	gray
------------	------

PCB ASSY

7510752000	ET Board (pcb 2292051100) Replacement ET Board includes Analog Board, VR Board and SW Board. 補修用ET Boardは Analog Board, VR Board, SW Boardを含みます。 Analog Board (pcb 2292050402) Note: Chip parts on Analog board are not available. 注意: Analog Board上のチップ部品は供給されません。 VR Board (pcb 2292051100) SW Board (pcb 2292051100)
------------	--

***** LED Board(PS-2) (pcb 2292053300)

IC

15229843	M74007 BOS-0001	Gate Array
15179359	M5M4464P	DRAM
15159503	TC40H000	
15159115H0	HD4066BP	
15219181	M5207L01	VCA
15189185	M5223L	OP Amp
15189203	μ PC4072HA	
15189111JI	NJM311	
15199146	NJM2930L05	

TRANSISTOR

15119105	2SA-733P	
15129137	2SC2603-28F	
15119602	2SB647C	
15139131	2SK184GR	FET

CRYSTAL

12389757	4.286464MHz
----------	-------------

DIODE

15019209T0	S5500G	
15019124	1S-188FM1	
15019125	1SS-133	
15029198	LN-28RP	LED

RESISTOR

13919172	RKM10L502	Ladder Network
----------	-----------	----------------

JACK

13449711	HEC0470-01-630	AC Adaptor	
13449150	HLJ0544-01-010		INPUT
13449105	SG-7615		OUTPUT
13449106	SG-7622		TUNER OUT

SWITCH

13129710	JM-0404	Key Switch	
13119512	SRBM16		MODE

POTENTIOMETER

13279786	EVJ-KAAP15B14	10kB	FINE/MANUAL
13279785	EVJ-KAAP15B54	50kB	FEEDBACK
13279846	EVJSBAP15-751	50k x 2BH	BALANCE
13299153	H0651	4.7kB	trimmer
13299140	H0651	10kB	trimmer

MISCELLANEOUS

13529145	DSS306-55FZ103N	EMI Filter
2220011800	PCB Holder	
2347023100	Flat Cable	
2341057900	Connector Cord	
2215070201	Guide Bushing	
2226033300	Cushion	
2217010900	Coil Spring	
2341041400	Battery Snap	
2216056000	NS-2 Plastic Sheet	clear large type
2213070900	Jack Spacer	
2225025500	PS-2 Shield	

CHANGE INFORMATION

変更案内

IMPORTANT

重要

The change (A) below must be done with the units numbered prior to 845800.

下記のノイズ対策(A)は製番845800までの製品に対して必ず実施して下さい。

- NOISE (high-frequency)
 (A) EFF.SN845800 - 859200
 Capacitor
 C3 , C21 (Analog Board)
 5600pF to 5600pF
 with 0.0047 μ F
 (surface mounting)
 (Refer to Fig.A)
 C6 (ET Board)
 47 μ F/6.3V to 470 μ F/10V
 (Refer to Fig.B)

- ノイズ (高域)
 (A) 実施製番845800 から 859200
 コンデンサ定数変更
 C3 , C21 (Analog Board)
 5600pF \rightarrow 5600pFに0.0047 μ F
 を裏付けする
 (Fig.A 参照)
 C6 (ET Board)
 47 μ F/6.3V \rightarrow 470 μ F/10V
 (Fig.B 参照)

REASON:

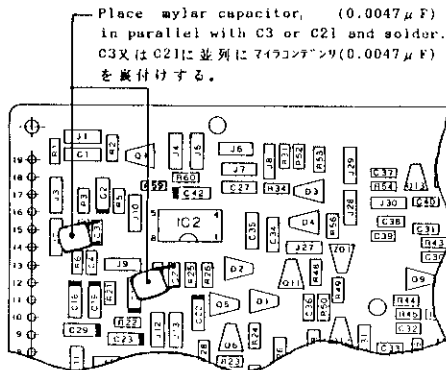
PREEMPHASIS and DE-EMPHASIS circuits cannot reduce high-frequency noise.

理由:

PREEMPHASIS, DE-EMPHASIS回路の高域特性が十分でなかったため、高域ノイズを除去できなかった為

Fig.A

Analog Board

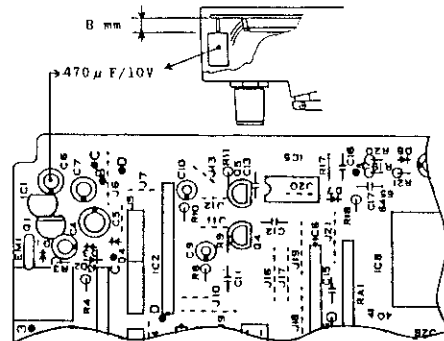


- (B) EFF.SN859300 - UP
 Capacitor
 C3 , C21 (Analog Board)
 5600pF to 0.01 μ F
 C6 (ET Board)
 47 μ F/6.3V to 470 μ F/10V

* (A) and (B) above mentioned are same change.

Fig.B

ET Board



- (B) 実施製番859300 以上
 コンデンサ定数変更
 C3 , C21 (Analog Board)
 5600pF \rightarrow 0.01 μ F \leftarrow
 C6 (ET Board)
 47 μ F/6.3V \rightarrow 470 μ F/10V

* 上記(A)と(B)は同じ変更です。

 Roland®

17059411

UPC

17059411



(L'96)

 **BOSS**