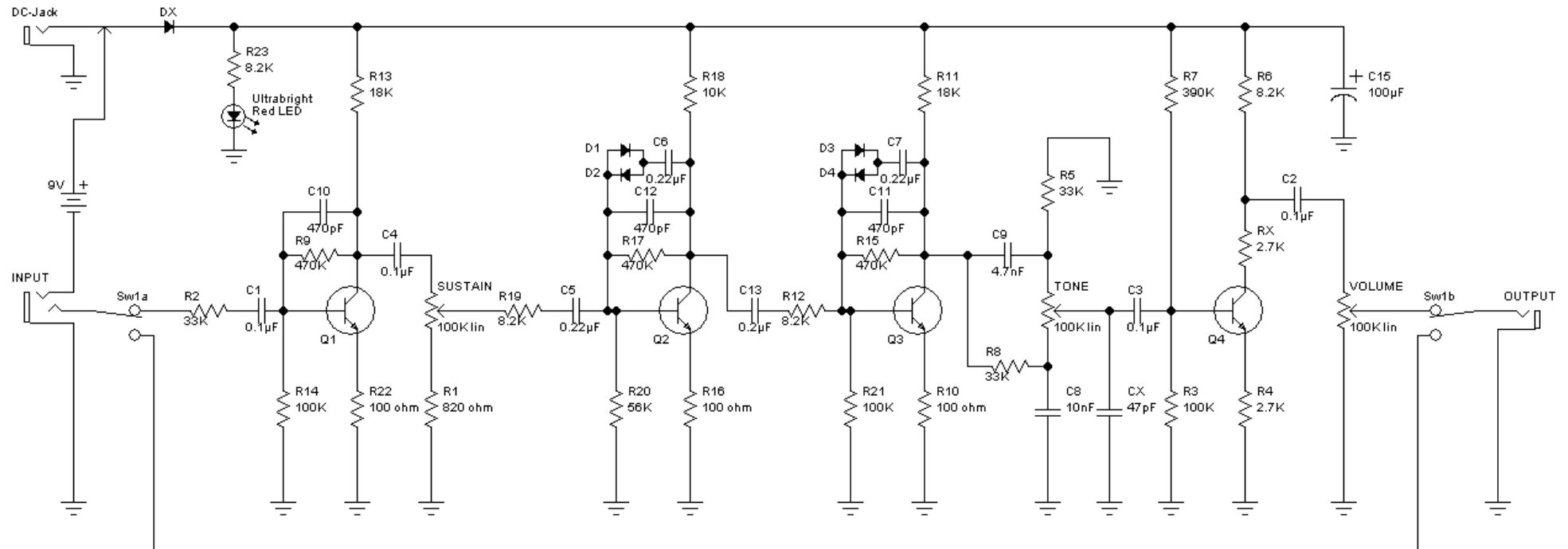


# Skreddy Mayo



Q1, Q2, Q3, Q4 - 2N5133 NJS

D1, D2, D3, D4 - 1N914 (?)

All resistors are vintage carbon composition resistors, except R23 which is a standard carbon film resistor.

All capacitors are ceramic capacitors, except C5, C6 and C7 which are metal film capacitors, and C15 which is an electrolytic capacitor.

C5 is a 250V metal film capacitor. C6 and C7 are 63V metal film capacitors (the same type as C5, but smaller).

The 3PDT switch is wired for grounded input when bypassed (not shown).

The shown tonestack is for classic mid scoop. For flat mids, replace C8 and C9 both for 5.6nF capacitors.

Note R19 and C5 which are inverted from a standard BMP, and the added CX and RX components.

I'm not shure of the CX value; it is a small ceramic capacitor with only "47" written on it.

Title Skreddy Mayo		
Author Marc Ahlfs Skreddy Pedals		
File J:\Bureau\DIY\Skreddy Mayo\skreddy mayo.dsn	Document	
Revision 1.0	Date	Sheets 1 of 1