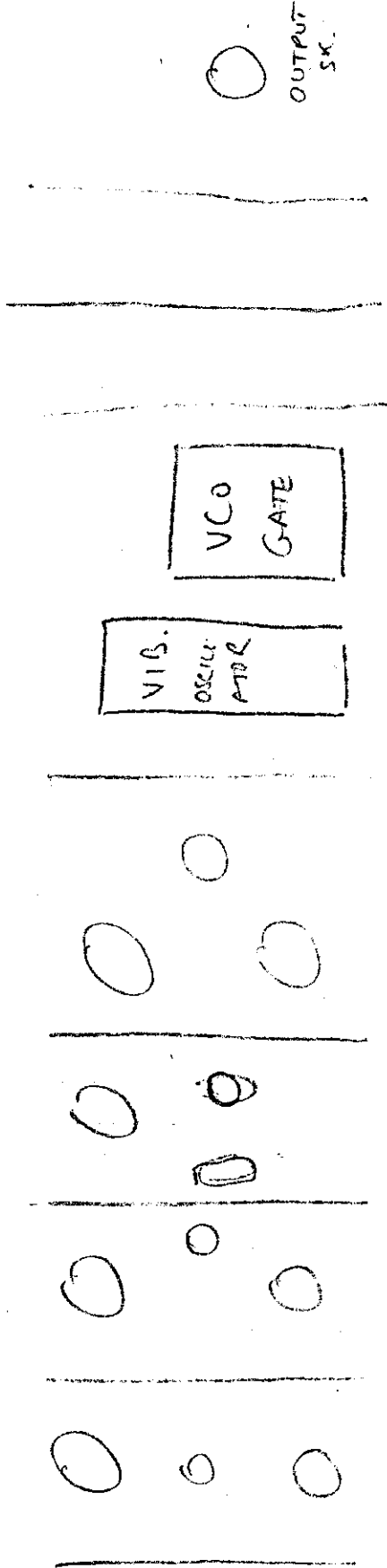


TEST  
OSCILLATOR

PRE AMP	T BURST	F UZZ	S USTAIN	L DR ASSY
------------	------------	----------	-------------	-----------------

VOLTAGE CONTROL OSCILLATORS			
①	②	③	④



QUAD OSC  
ROTY

QUAD REC  
H. SWEEP

MAINS  
ON  
OFF

OUTPUT  
SK.

LOWZ  
IN

HIGHZ  
IN

VU METER

FUSE  
0.25A

MATRIX  
TRANSFER

STAB.  
POWER  
SUPPLY

AD131

AD132

REVERS  
FIELD  
LAMP  
TX.

SMOOTHING  
CAPACITORS.

MAIN  
MIXER  
FOR  
OUTPUT  
SECTION

FUNDAMENTAL  
FREQUENCY  
GENERATOR

REVERB  
SPRING.

VARIABLE  
RESISTORS

REVERB  
DRIVE

FREQUENCY/VOLTAGE  
(D/A) CONVERTER

ENVELOPE  
SHAPE

REPEAT  
OSCILLATOR  
FOR  
ATTACK  
FILTER

2  
HARMONIC SWEEP  
FILTERS.

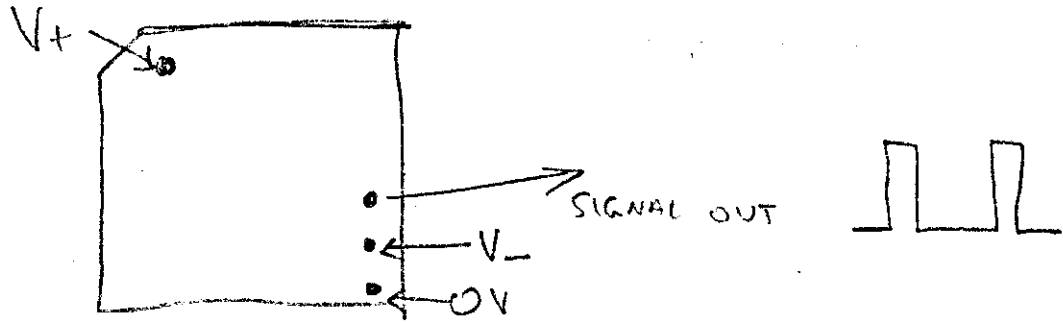
"NEW  
SIGNAL  
PRESENT"  
DETECTOR  
CIRCUITS

DIGITAL DRIVE FOR  
CYCLER, ATTACK FILTER

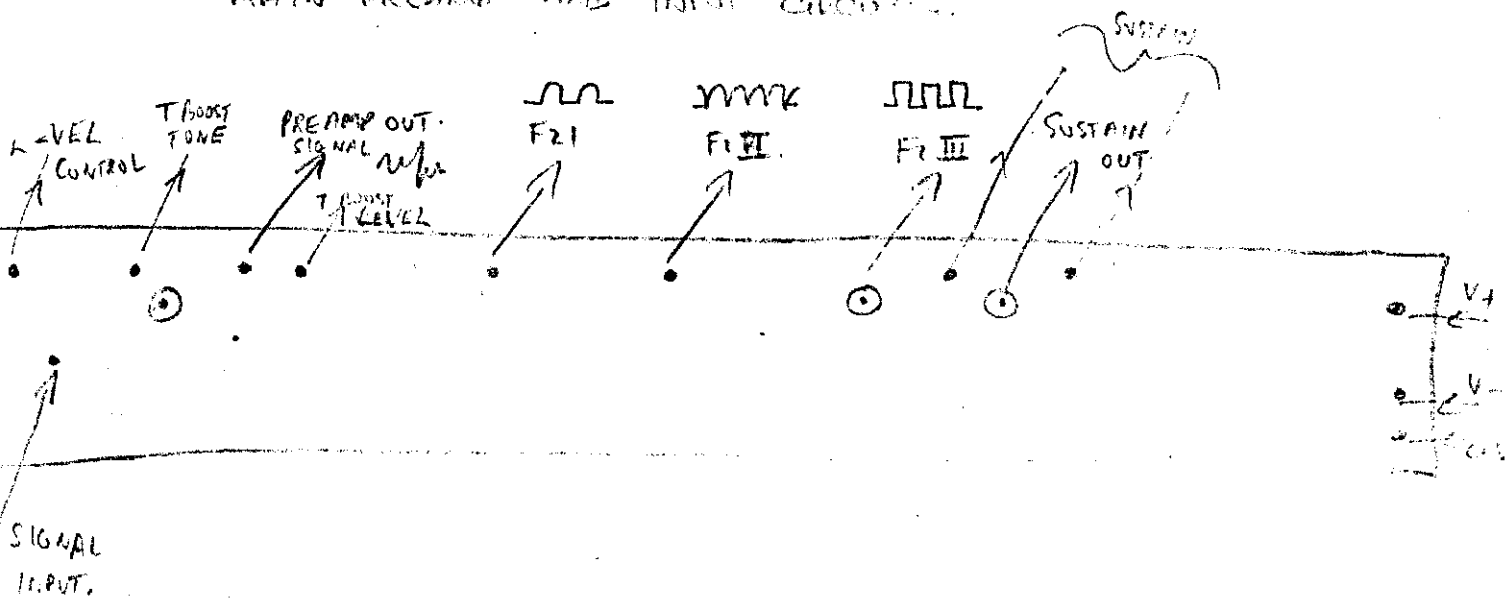
ATTACK  
FILTER  
RAMP GEN  
AND  
FILTER

MIKER FOR  
"CYCLER"  
3  
FILTERS  
FOR  
"ROTARY"  
FILTER

### TEST OSC.

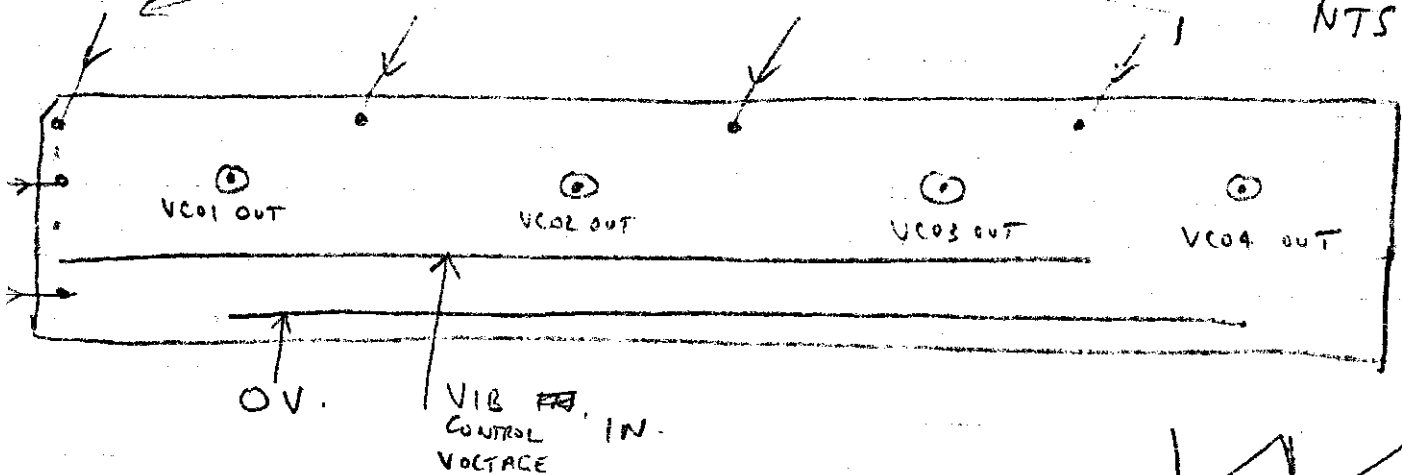


### MAIN PROGRAM AND INPUT CIRCUITS.

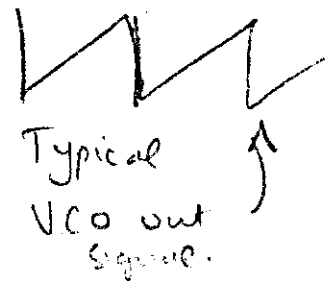


### DC VOLTAGE CONTROL INPUTS

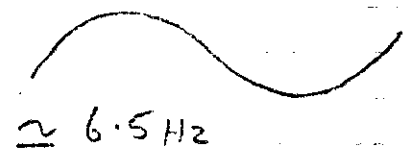
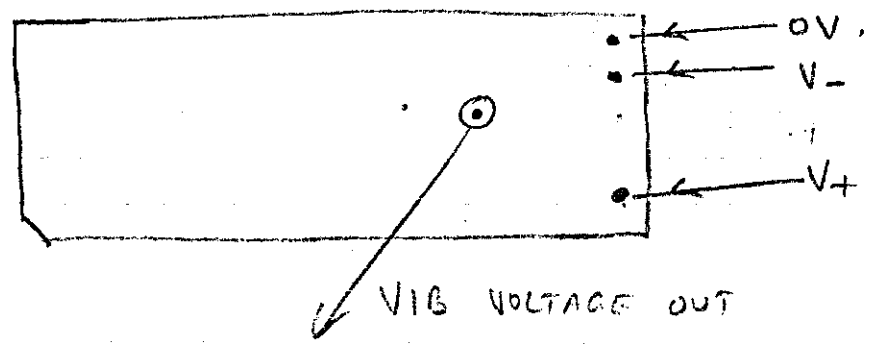
NTS.



VCO outputs

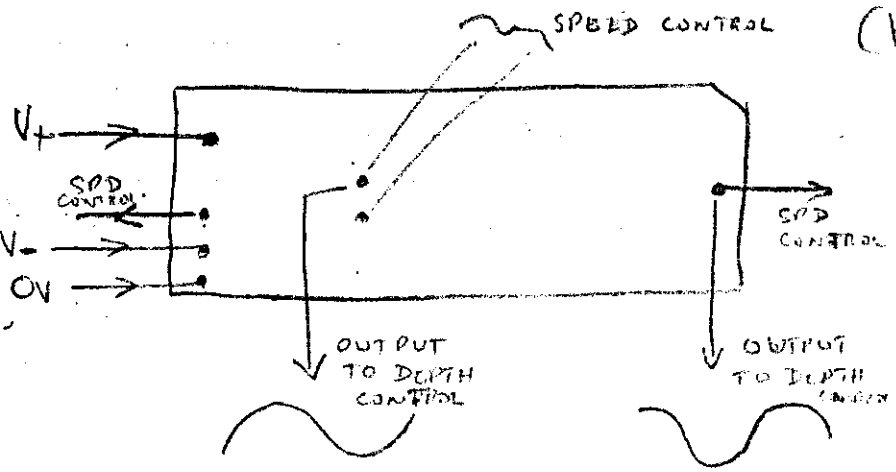


# VIB OSCILLATOR

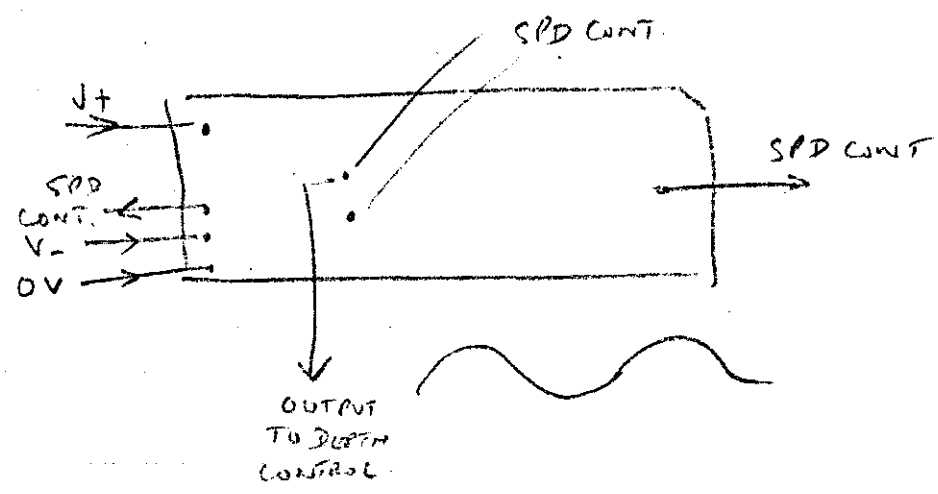


# QUAD OSCILLATOR

(HARMONIC SWEEP)

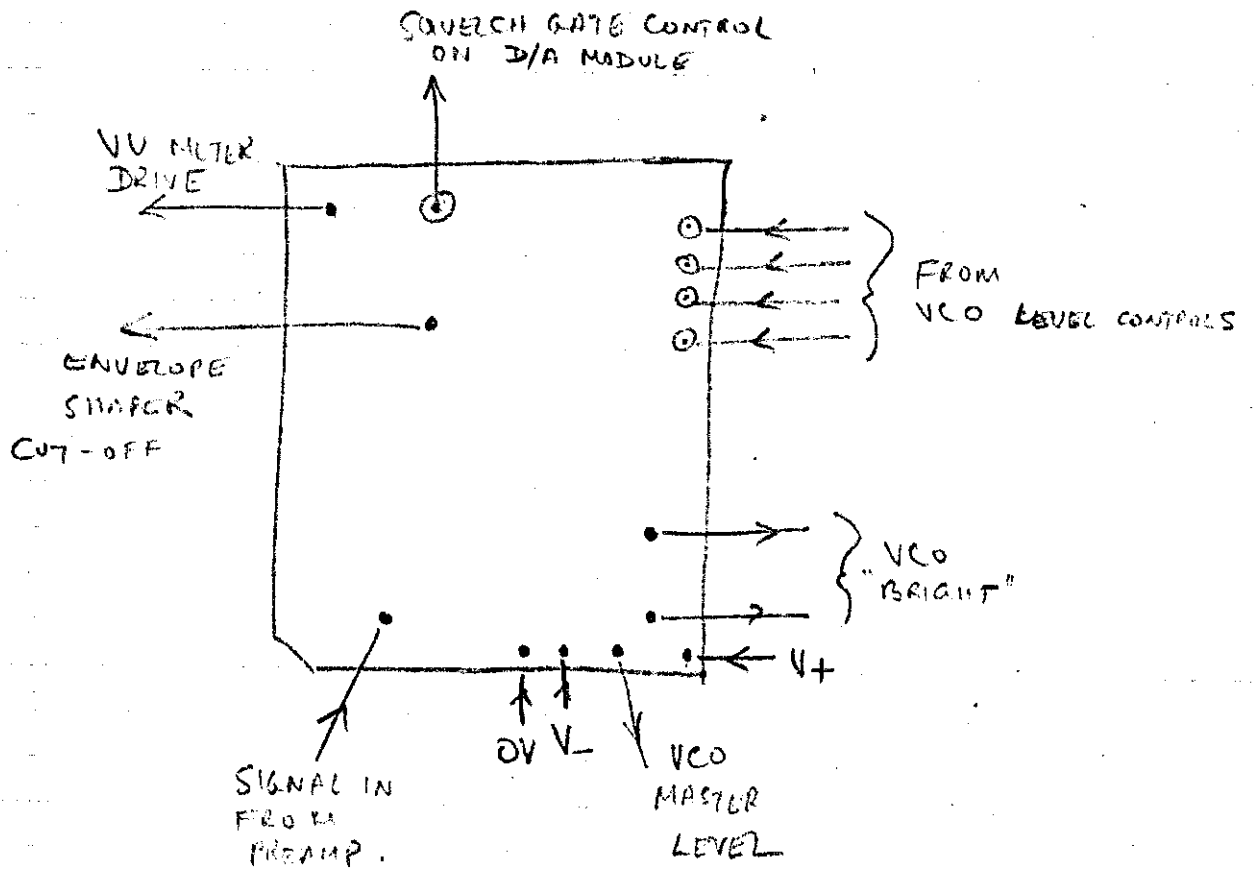


# QUAD OSC. (ROTARY FILTER)

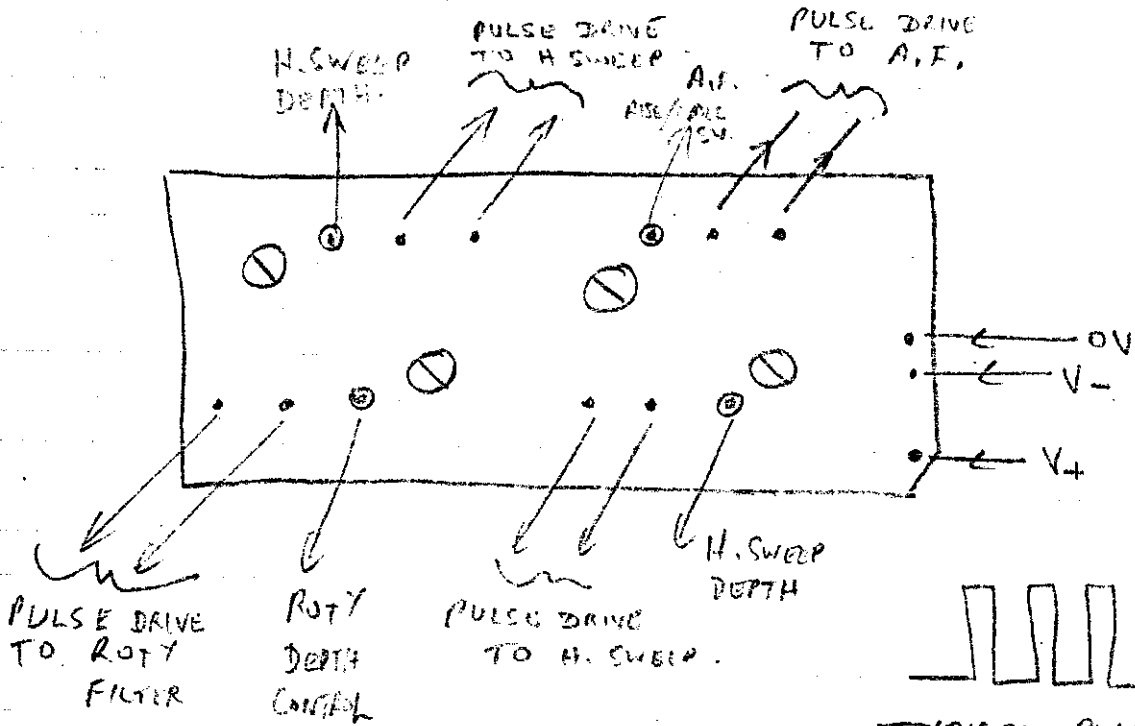


# VCO GATE

(5)



# DIGITAL DRIVER



TYPICAL PULSE DRIVE WAVEFORM

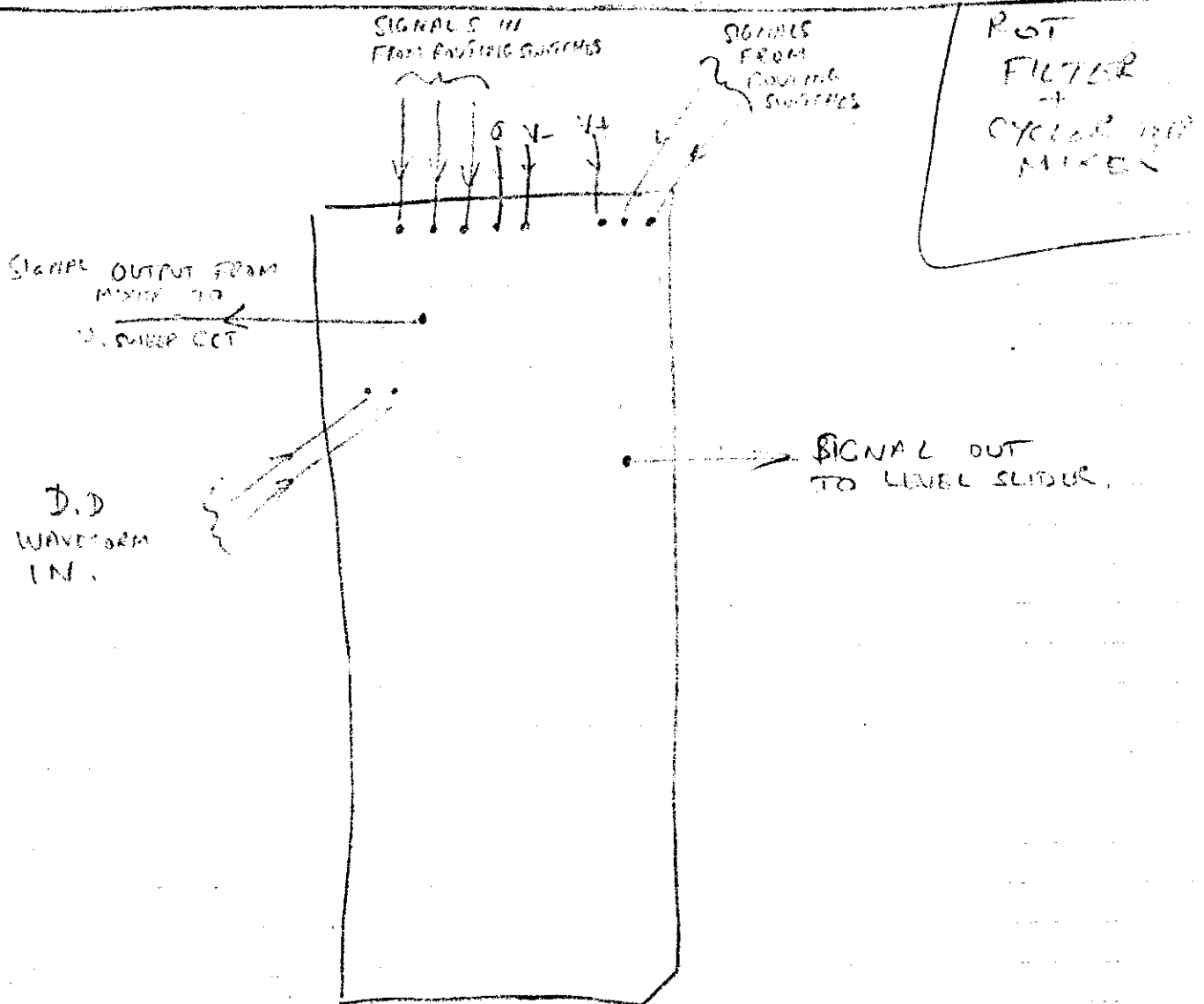
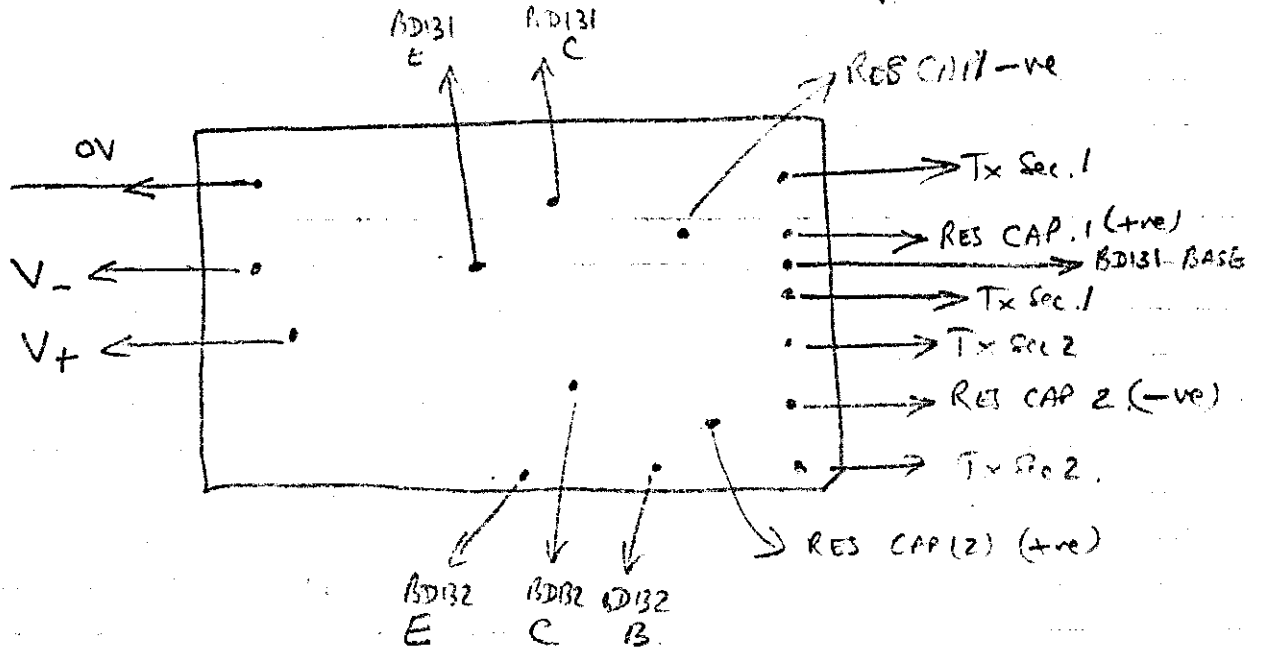
~ 100KHZ

M/S CONTROLLED BY APPROPRIATE QUAD DEC. (OR RAMP FOR A.F.)

# POWER SUPPLY.

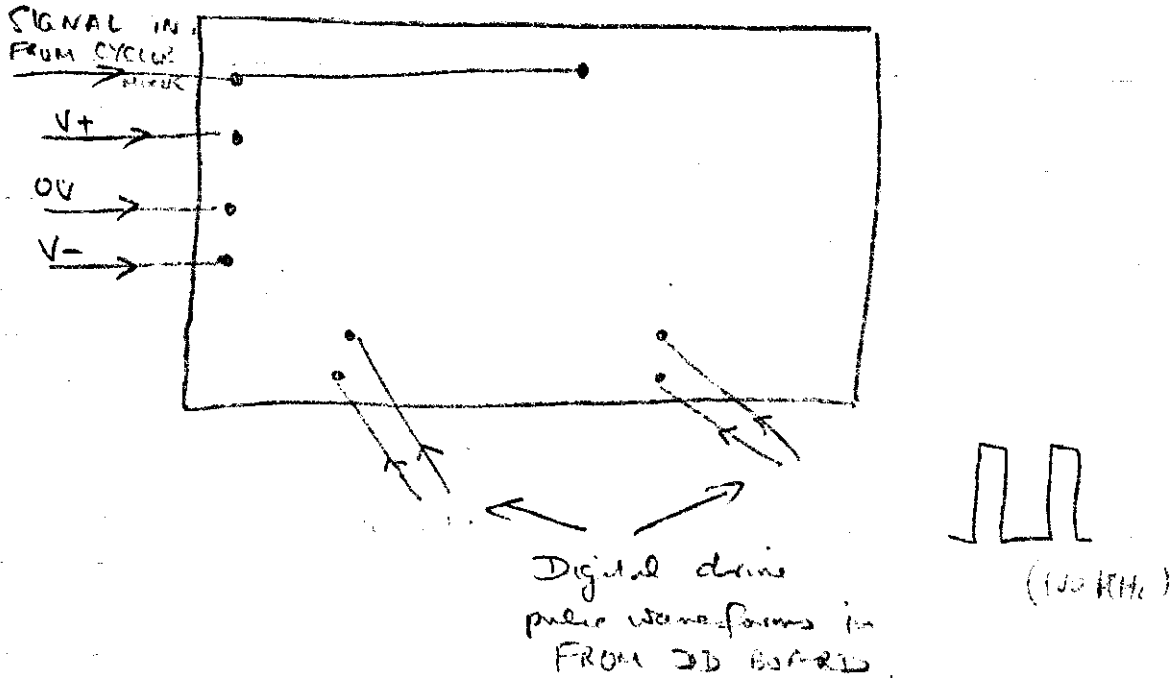
(6)

$V_+ = +12V$   
 $V_- = -12V.$

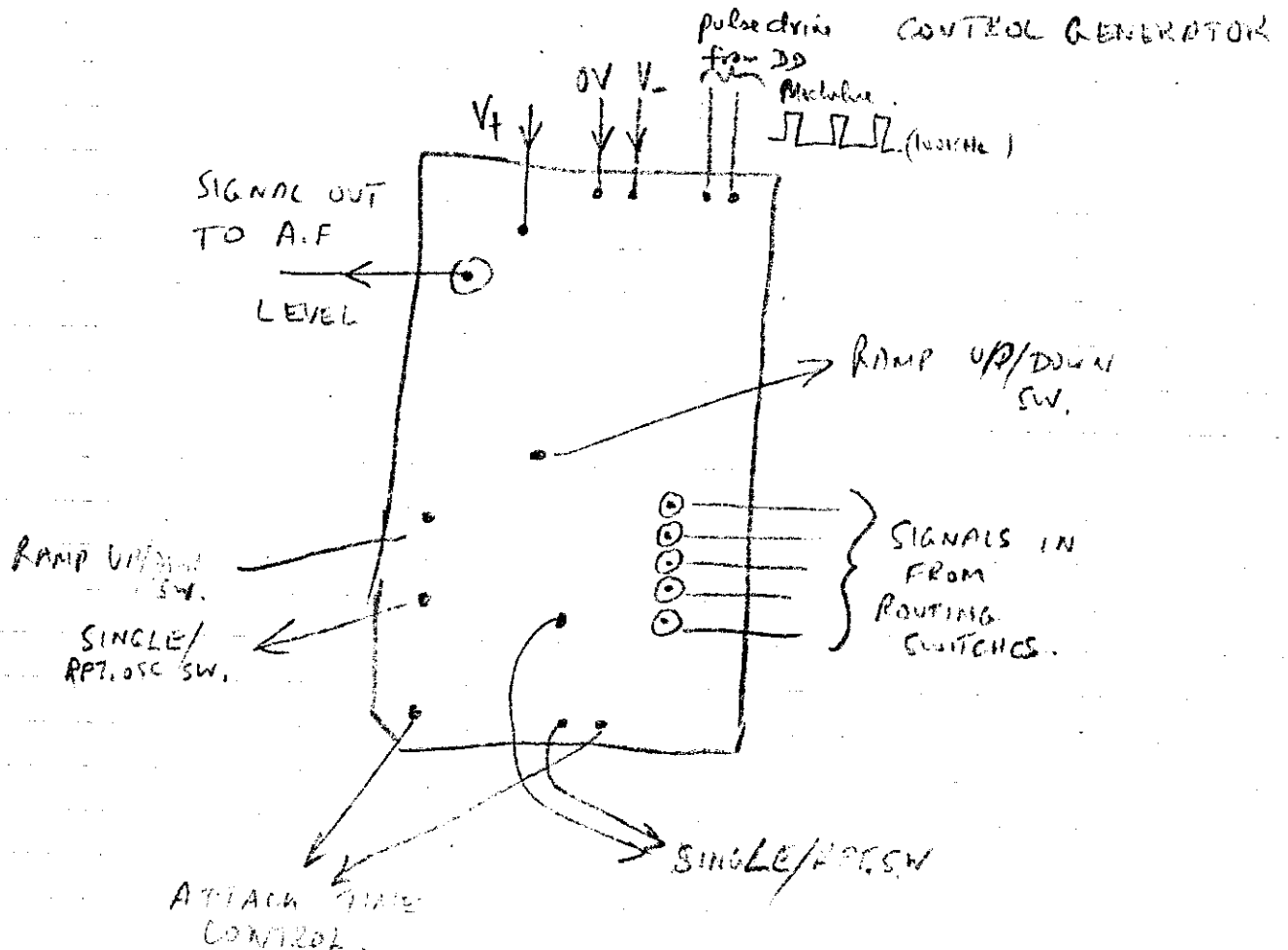


# HARMONIC SWEEP FILTER

(7)

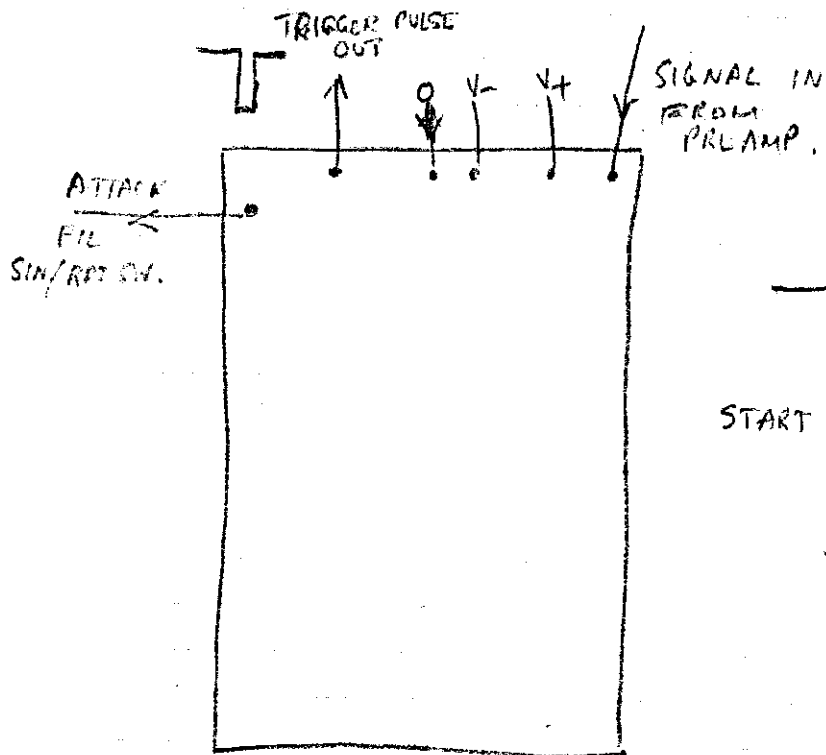


# ATTACK FILTER AND LAMP

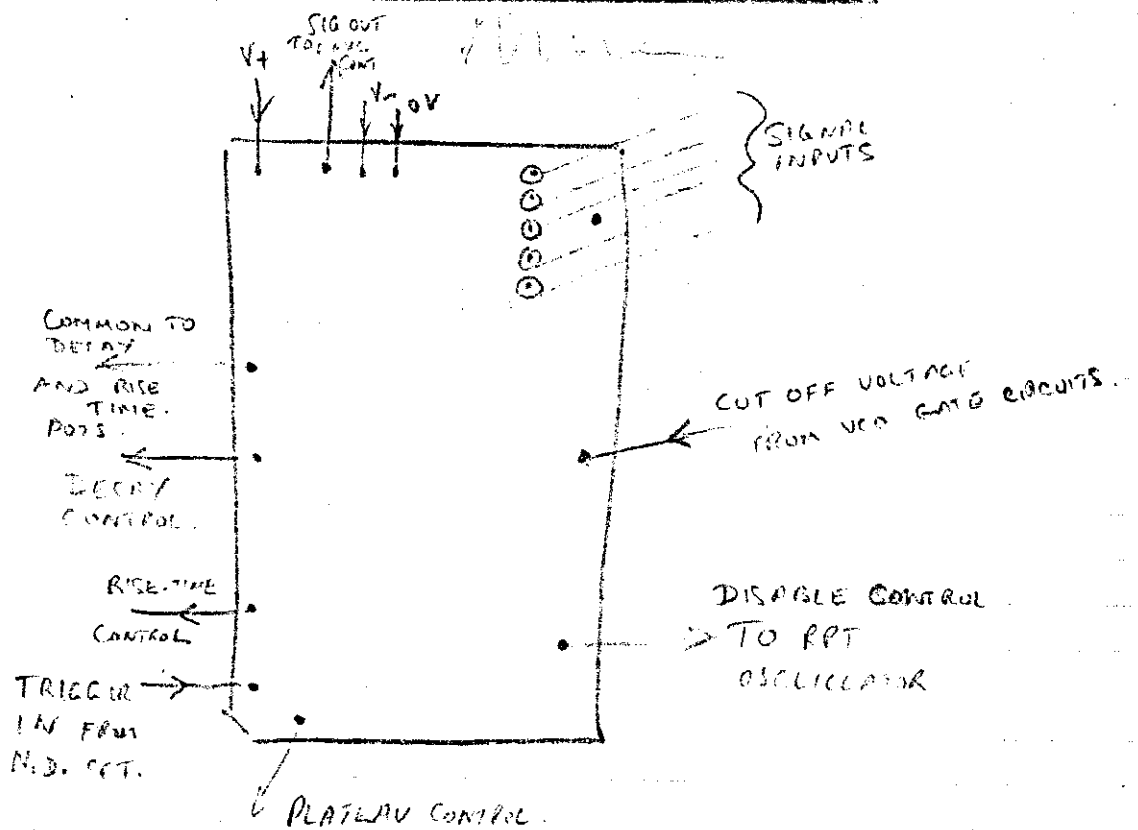


# NOTE DETECTOR CIRCUITS

(POTI/D)

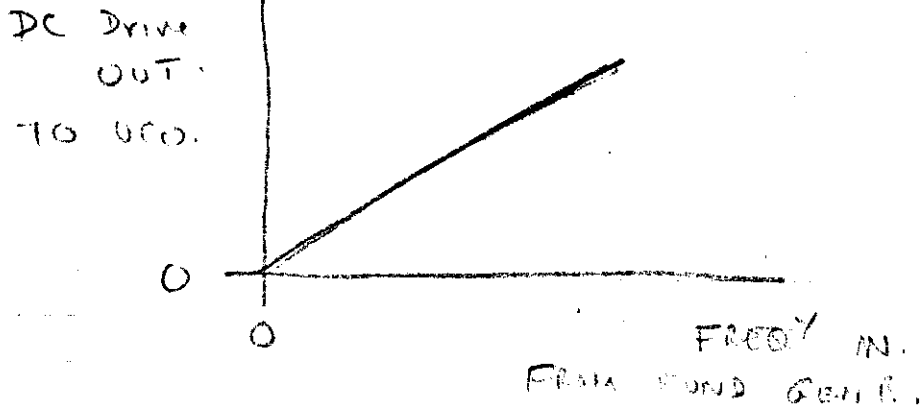
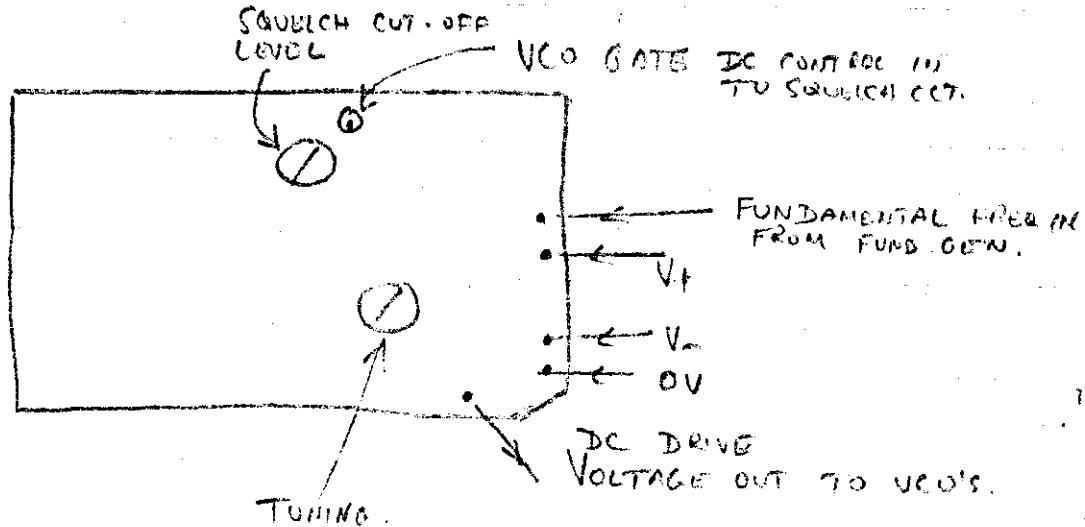


# LOW VOLTAGE SIGNALS

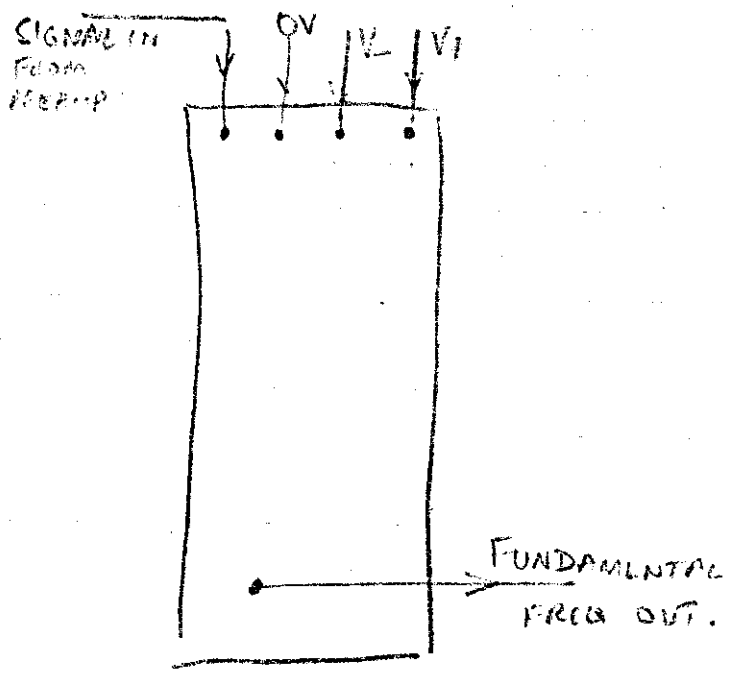




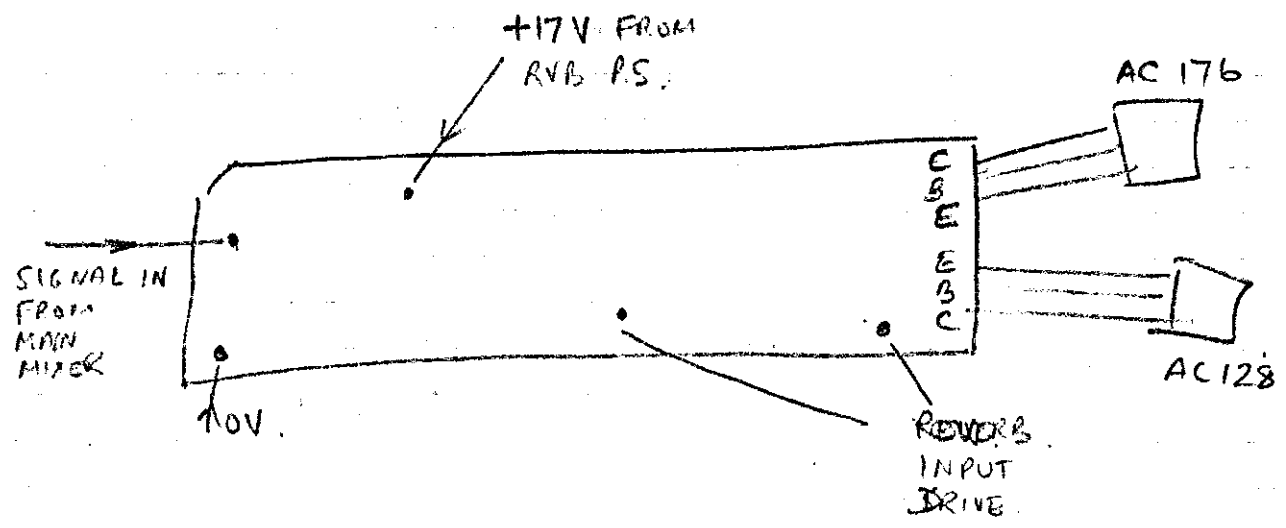
# PITCH TO VOLTAGE CONVERTER, AND SQUELCH GATE.



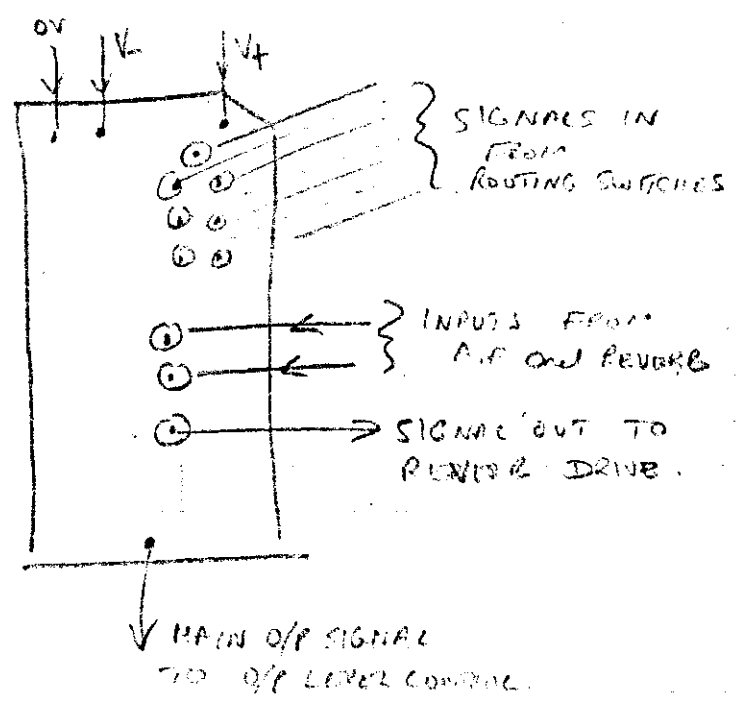
## FUND<sup>S</sup> GENERATOR.



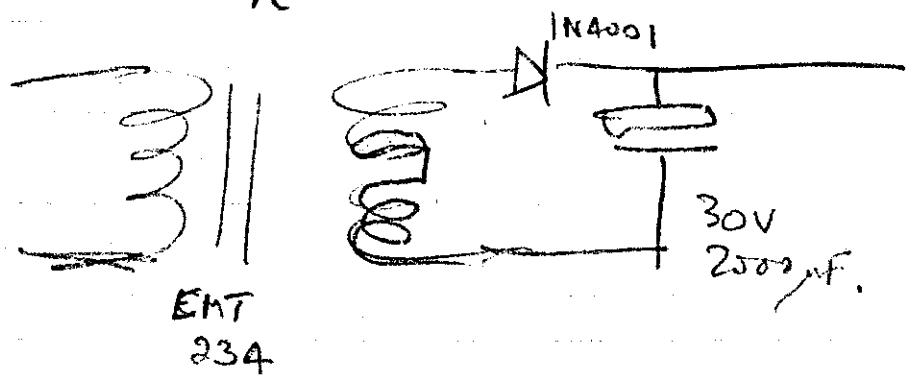
# REVERB DRIVE



# MAIN OUTPUT MIXER



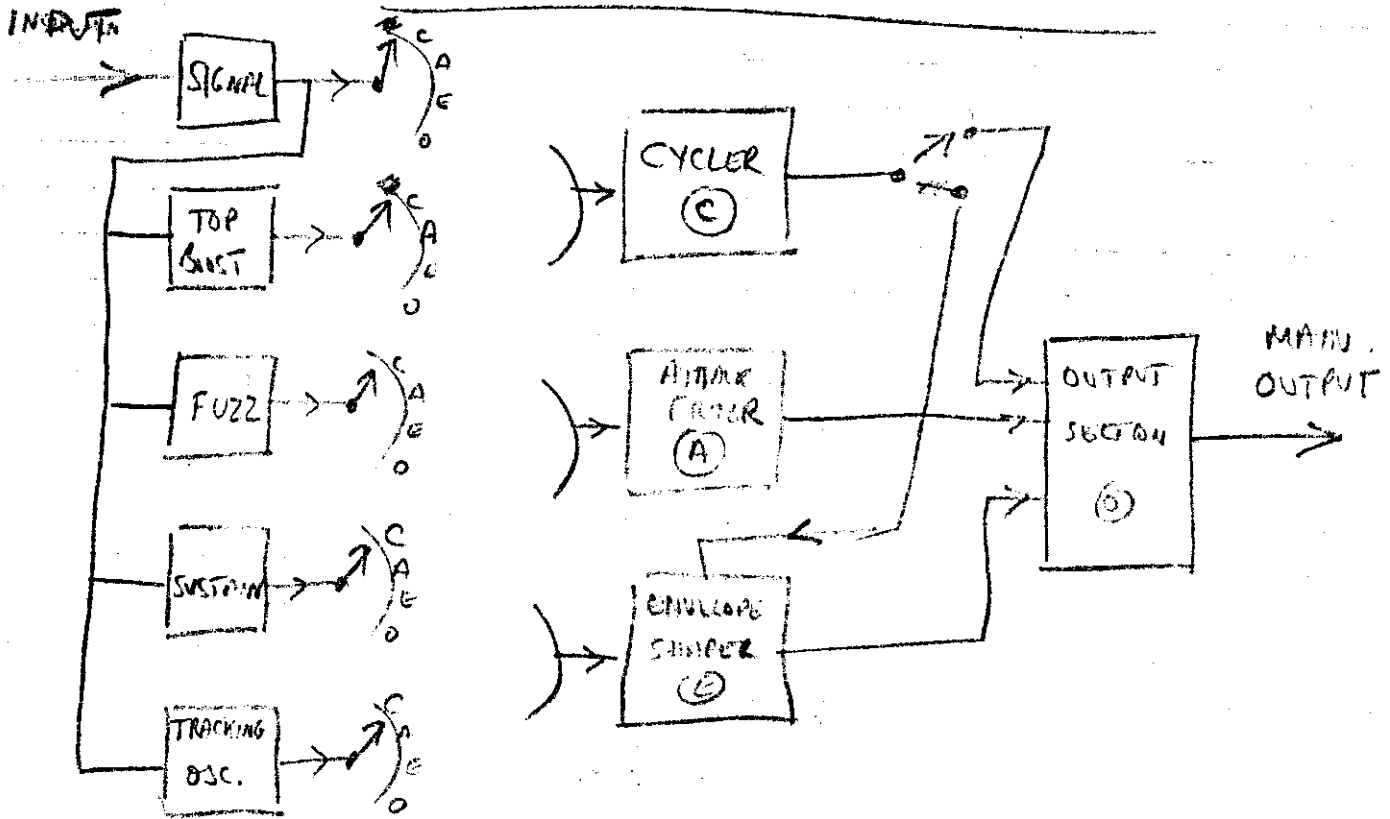
# AND PANEL INDICATOR LAMPS REVERB POWER SUPPLY.



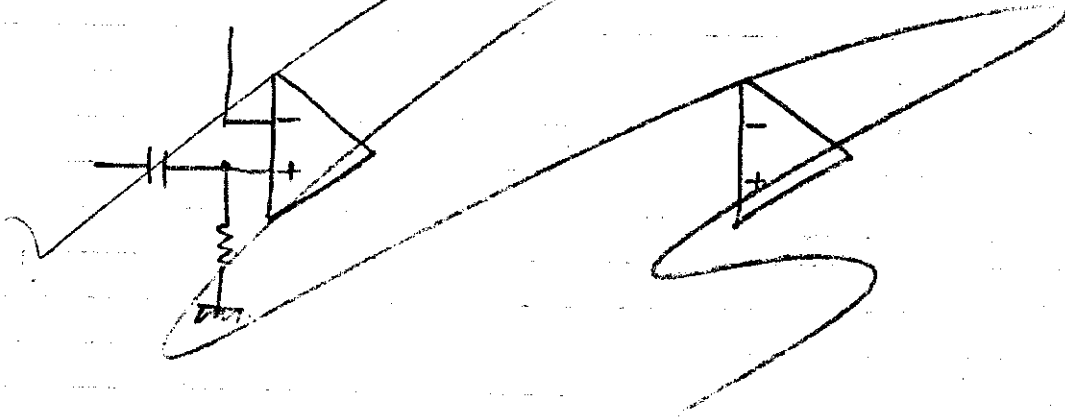
TO REVERB DRIVE COT AND ROTY SWITCHES FOR LAMP SUPPLY

# BLOCK DIAGRAM OF FM TUNING

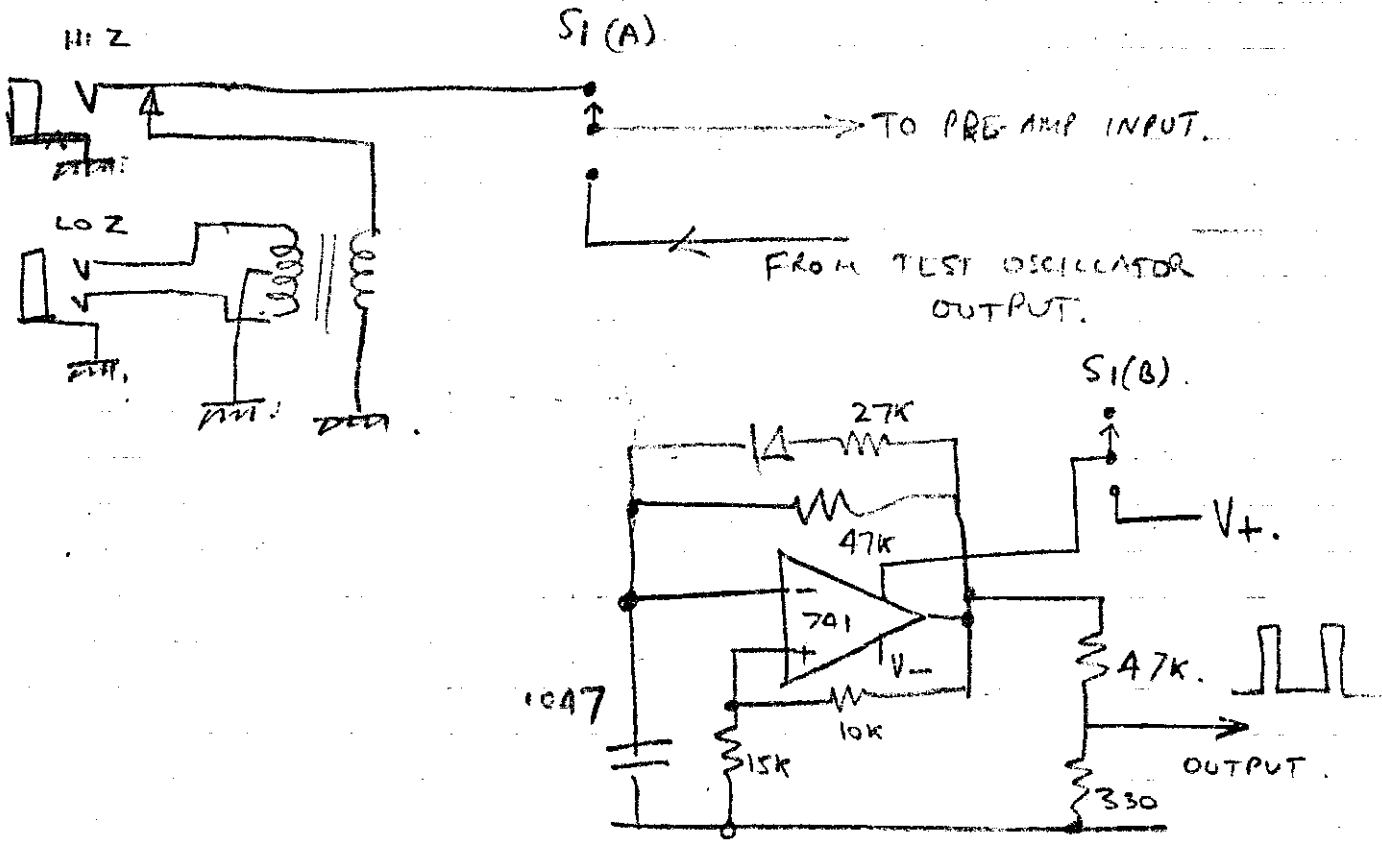
(11)



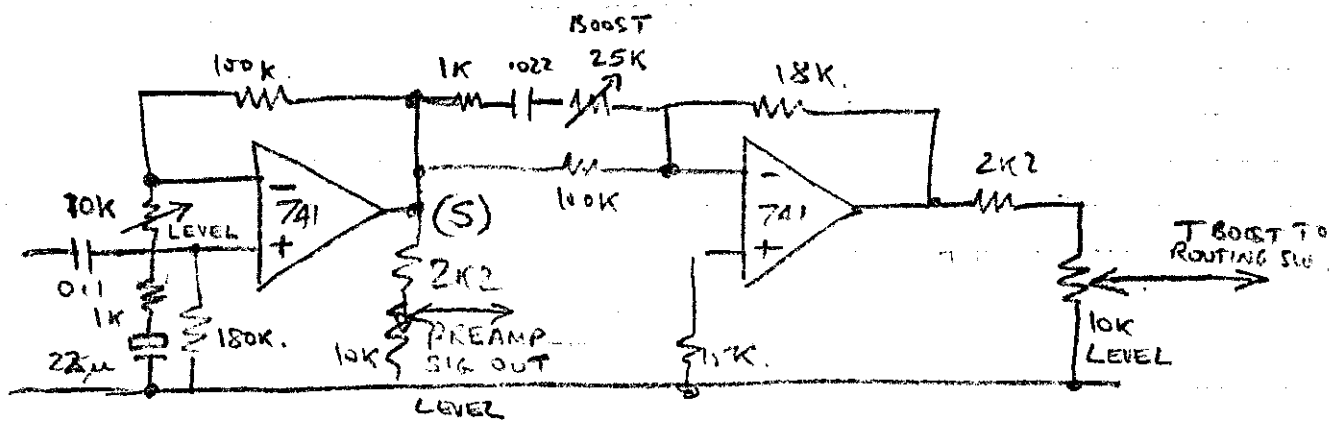
# PREAMP AND BOOST



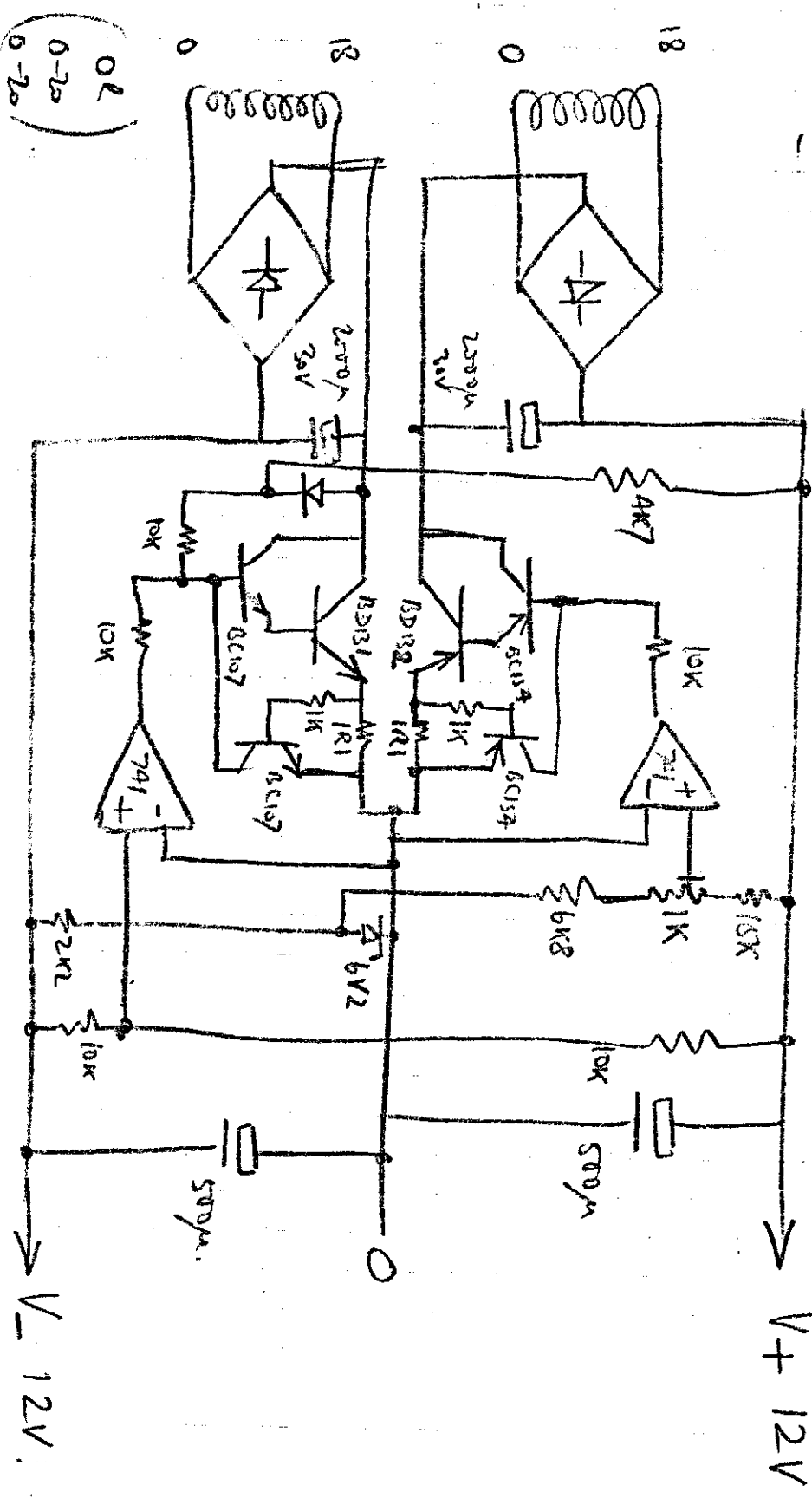
# INPUT SELECTION AND TEST OSCILLATOR



# PREAMP AND TREBLE BOOST



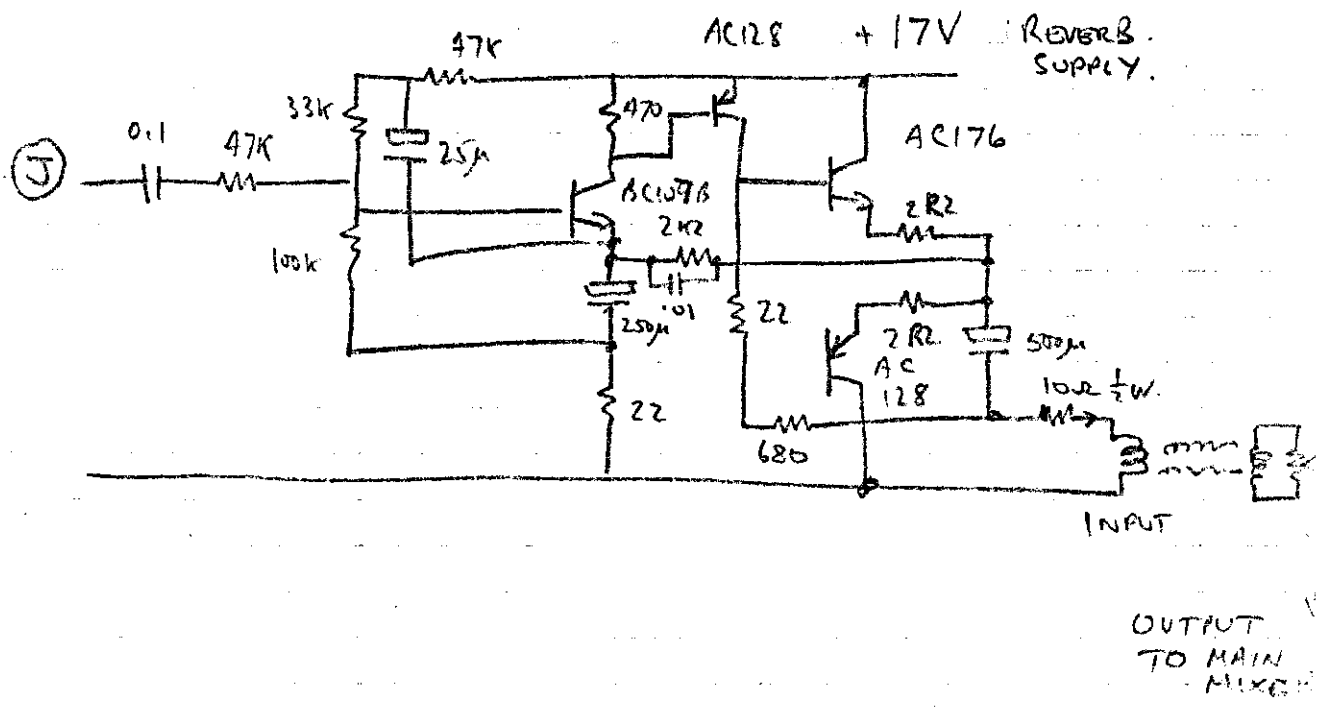
# MAIN POWER SUPPLY



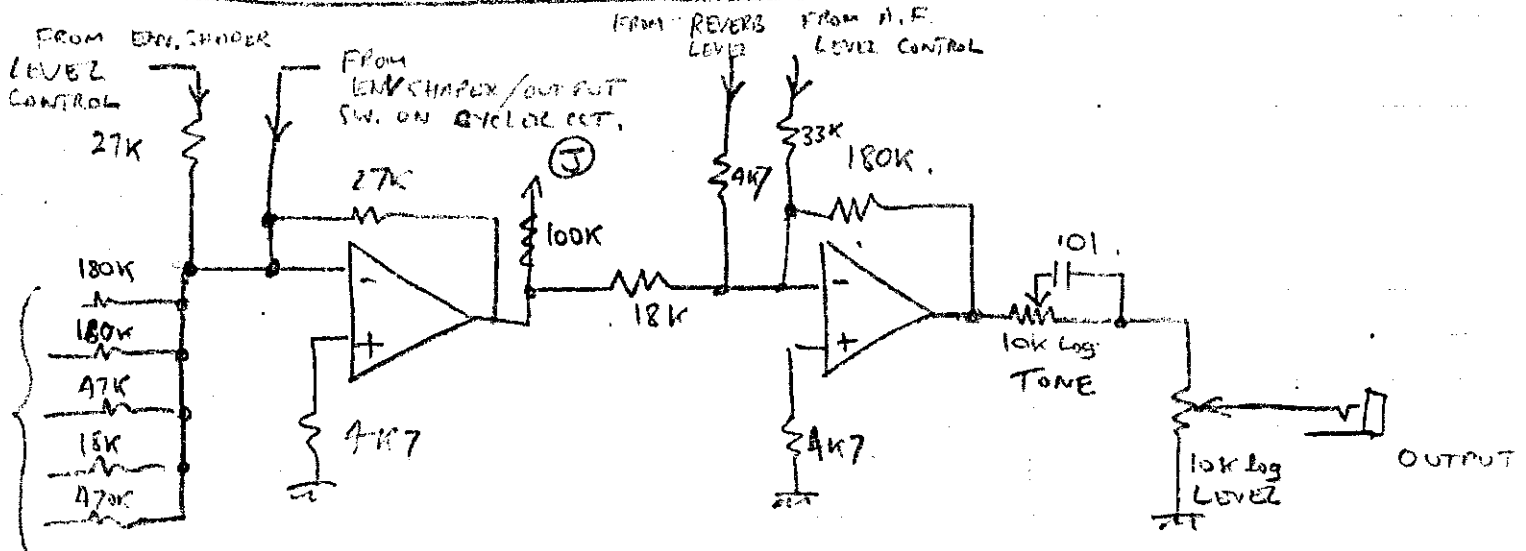
0.2  
0-20  
5-20

110  
110  
110

# REVERB DRIVE



# MAIN OUTPUT MIXER



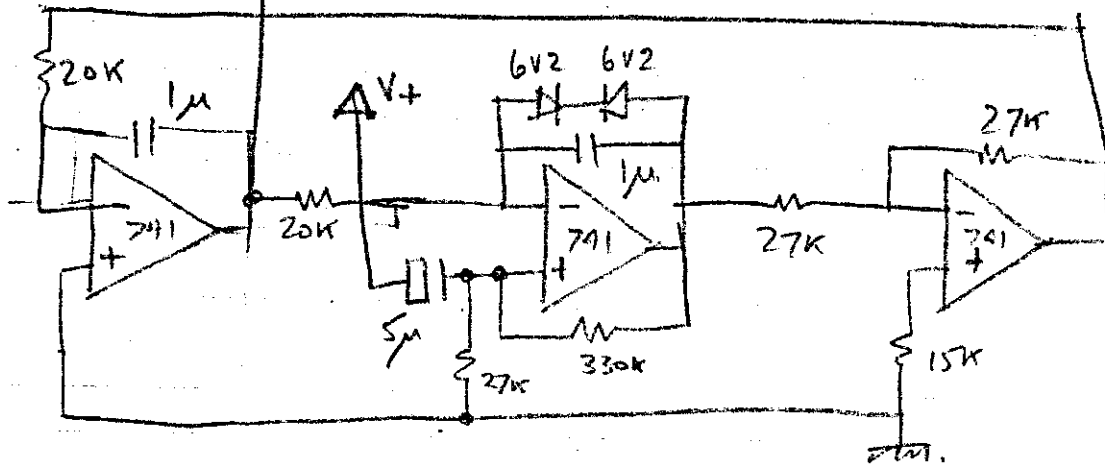
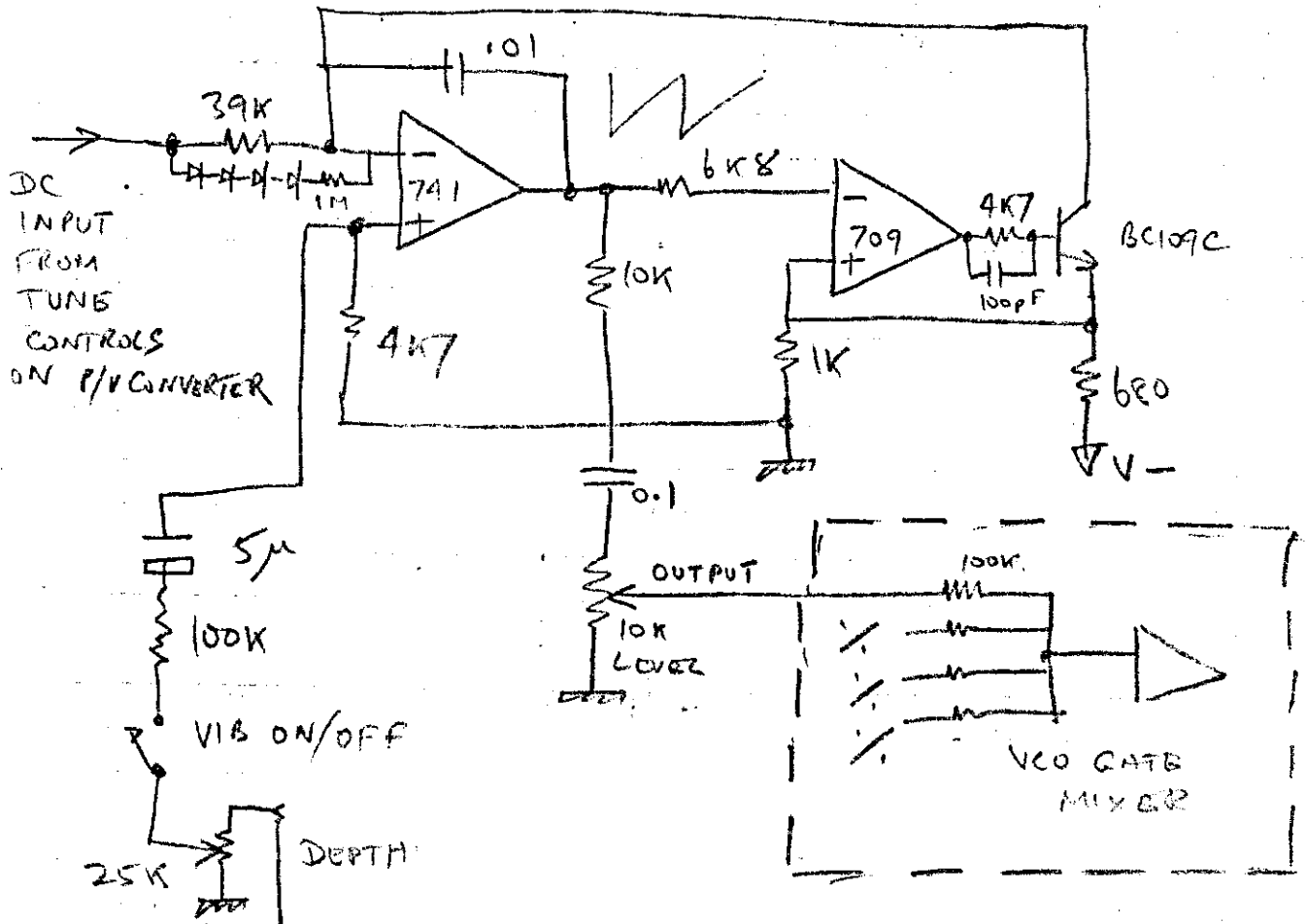
INPUTS  
FROM  
ROUTING  
SWITCHES





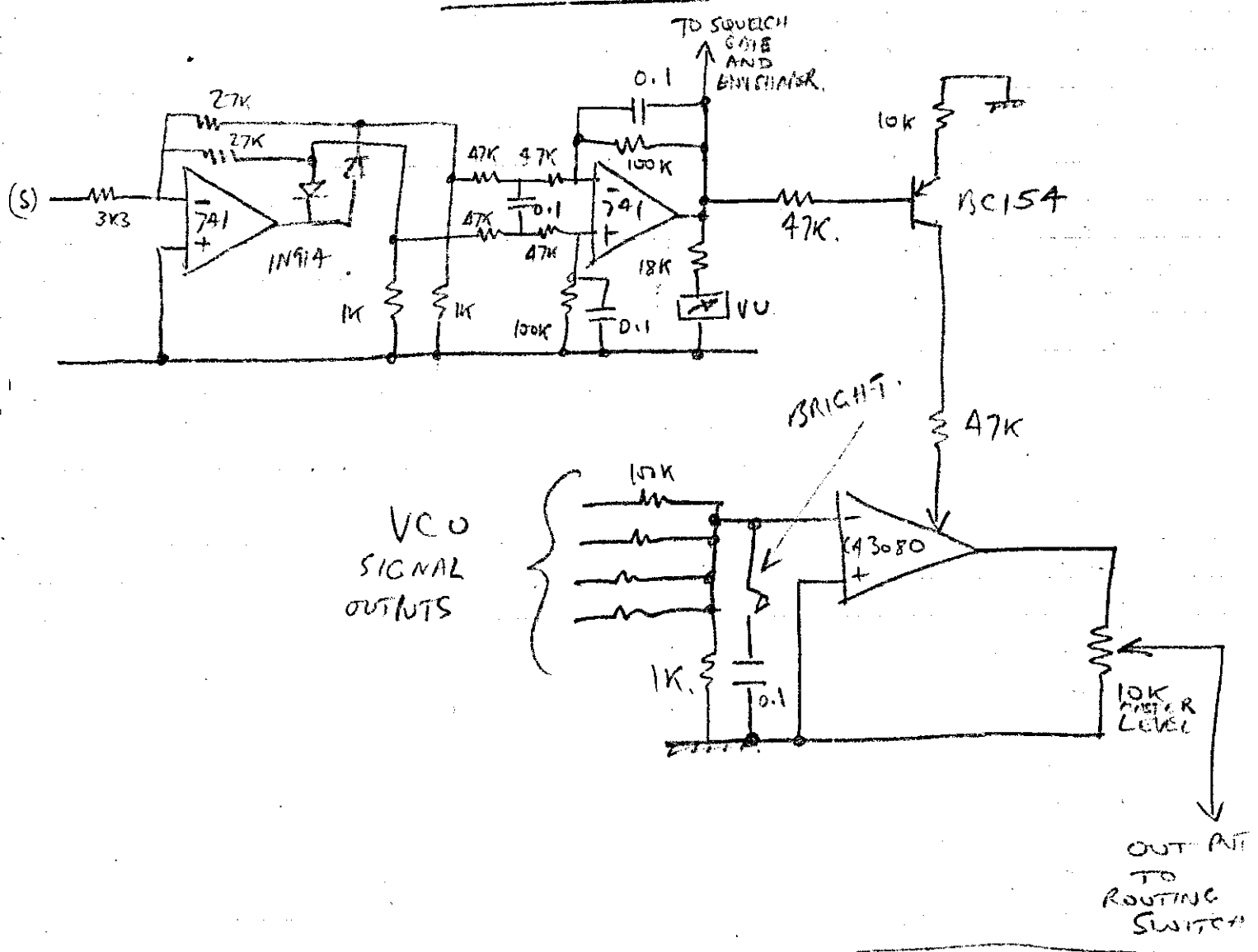


# VCO CIRCUIT (x4)



## VIBRATO OSCILLATOR

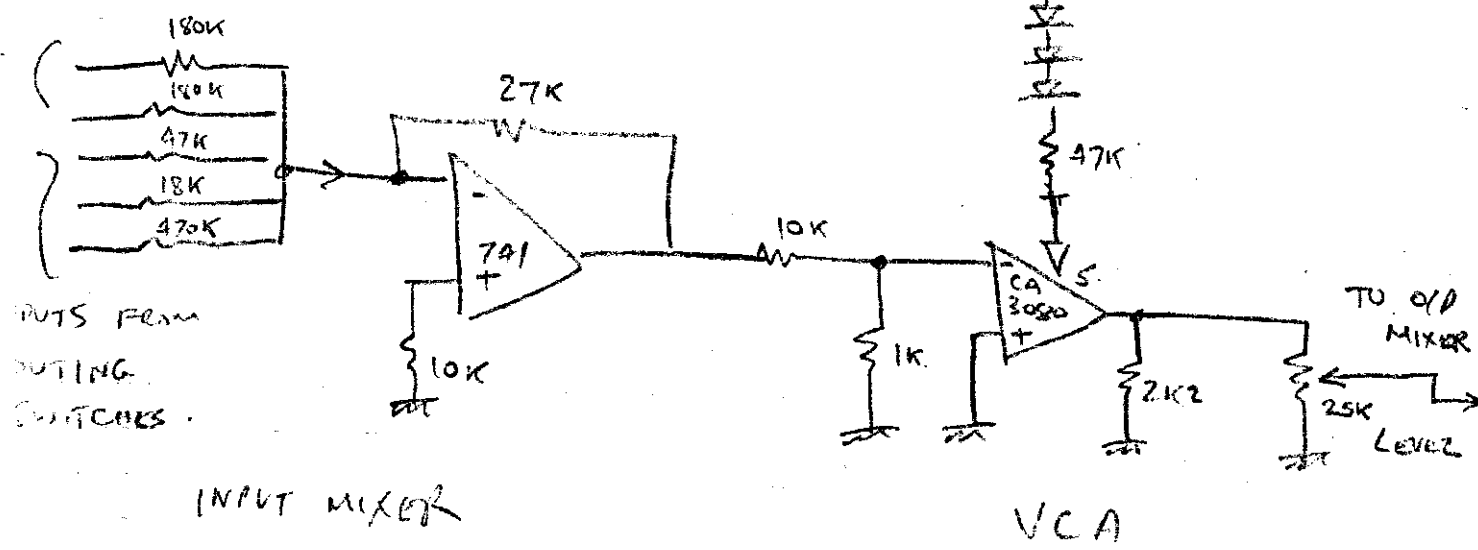
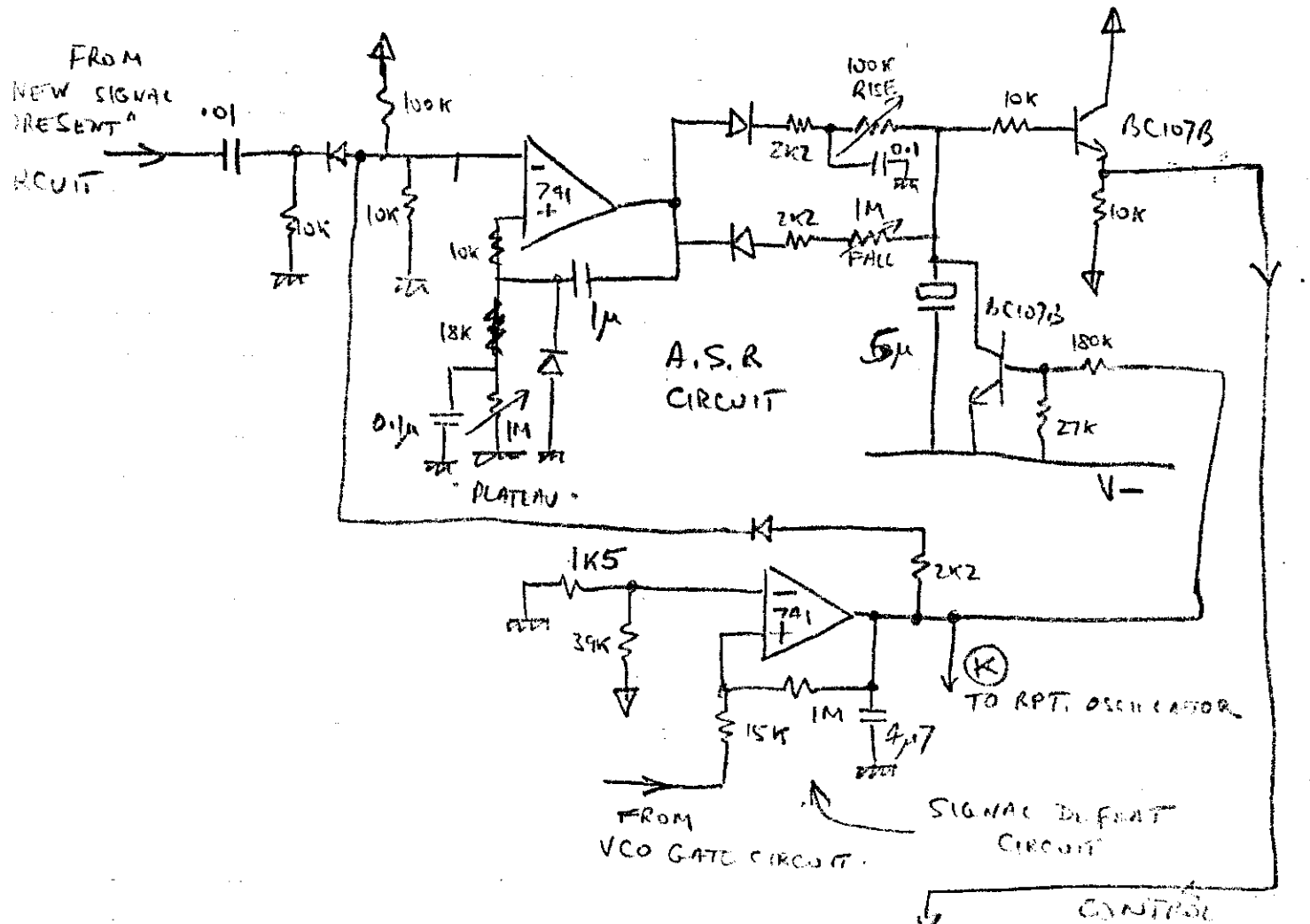
# VCO GATE







# ENVELOPE SHAPER



# REPENT OSCILLATOR

(22)

