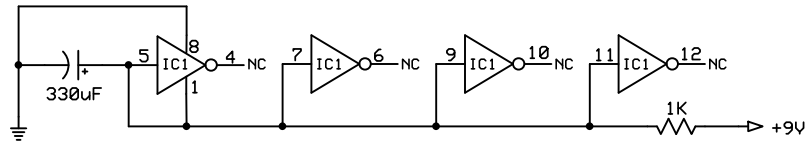


- IC1:** CD4049
D1: 1N4001
D2: Germanium (try 1N34, 1N60)
D3: Germanium (try 1N34, 1N60)
Q1: PNP Silicon Transistor
Q2: NPN Silicon Transistor



NOTES:

- 1: silk screen on PCB indicates 47K
- 2: the trace on the PCB goes out to the pad for Wire B - I still need to verify this connection
- 3: silk screen on PCB indicates 5K1
- 4: silk screen on PCB indicates 5K1
- 5: silk screen on PCB indicates 1N4148 diode
- 6: silk screen on PCB indicates 1N4148 diode

THIS SCHEMATIC IS NOT INTENDED FOR COMMERCIAL PURPOSES
[HTTP://WWW.FREESTOMPBOXES.ORG](http://www.freestompboxes.org)

"PURPLE PLATYPUS"	
WAY HUGE ELECTRONICS	
drawn by: Timm Horn	Rev 1.0 1/31/2011
viva la FSB!	