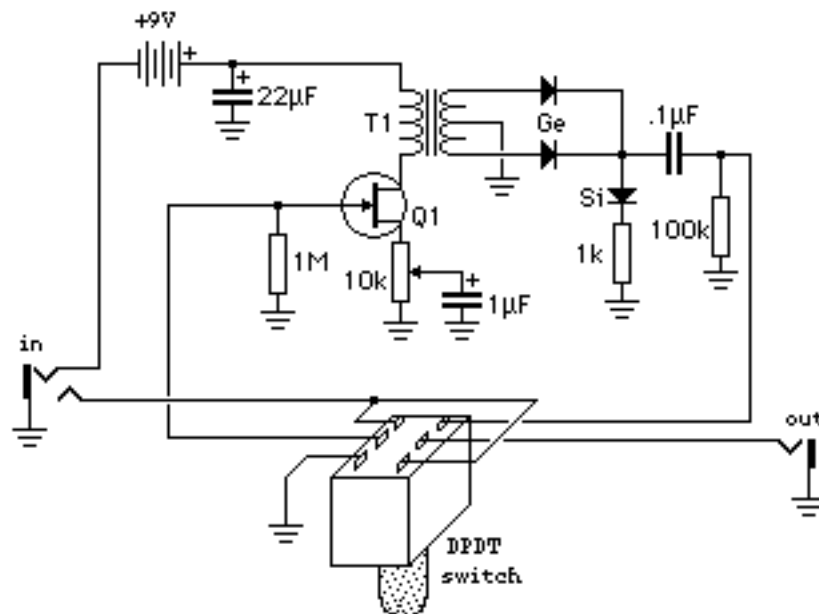


# Jawari



v6.3  
10/02

The Jawari is based on a pre-internet experiment I did. The word, "jawari" refers to the setup of the bridge on the Indian sitar, the characteristic which imparts a unique, buzzing quality.

This circuit, is similar in principle to octave-up effects, but the difference here is that gain is deliberately kept low. This difference is in dramatic contrast to the high gain used in most octave-up circuits, which helps increase sustain and bring out the upper harmonic.

Rather, this circuit exhibits a sustain reducing effect, in combination with a dramatic and dynamic timbre change, coaxing the tonalities of those stringed instruments from the East (like Neptune, NJ\*) out of a normal electric guitar. It's especially suited to single note lines using the bridge pickup, or two out-of-phase pickups.

Q1 is a J201

T1 is a 10k:10k audio transformer Mouser 42TM018 or 42TL218

The Ge diodes are 1N34

The Si diode is 1N4148

\* Neptune, NJ was the home of the old Danelectro factory, original manufacturer of the Coral electric sitar, among other things.