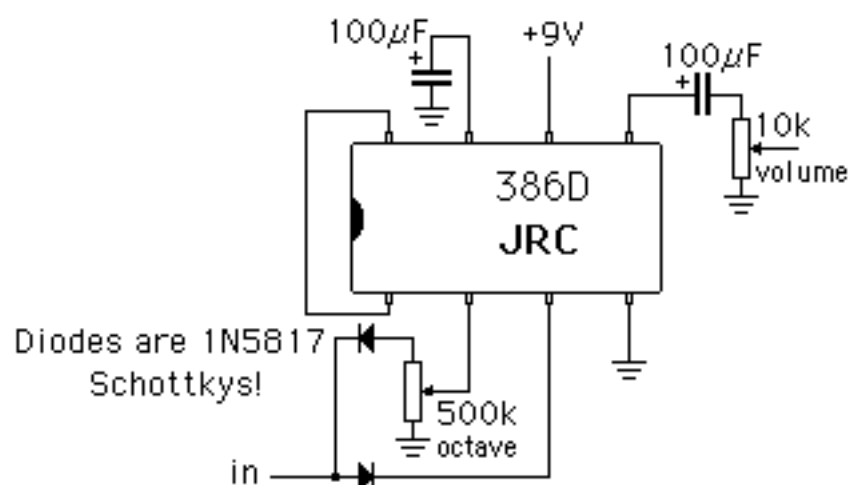


# Rambler



11/02  
v1.0

Simple octave/distortion with a twist of the knob. Very simple and can drive a speaker cabinet directly (use a JRC386D/NJM386D for best results) by cranking the volume all the way up and plugging into the cab. Octave knob goes from distortion to octave up tones. **1N5817 Schottkey diodes seem to work best here!**