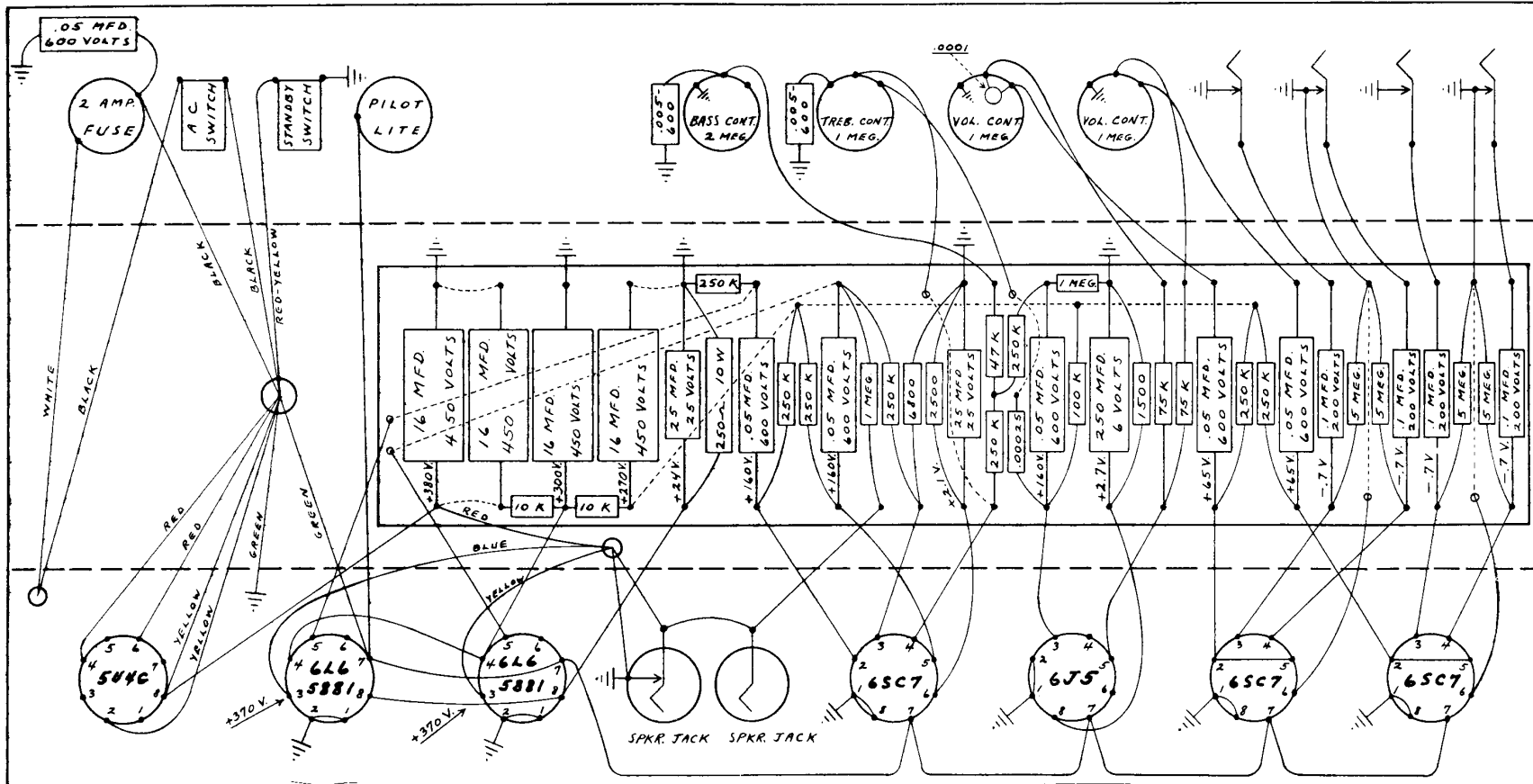


# FENDER "TWIN-AMP" LAYOUT

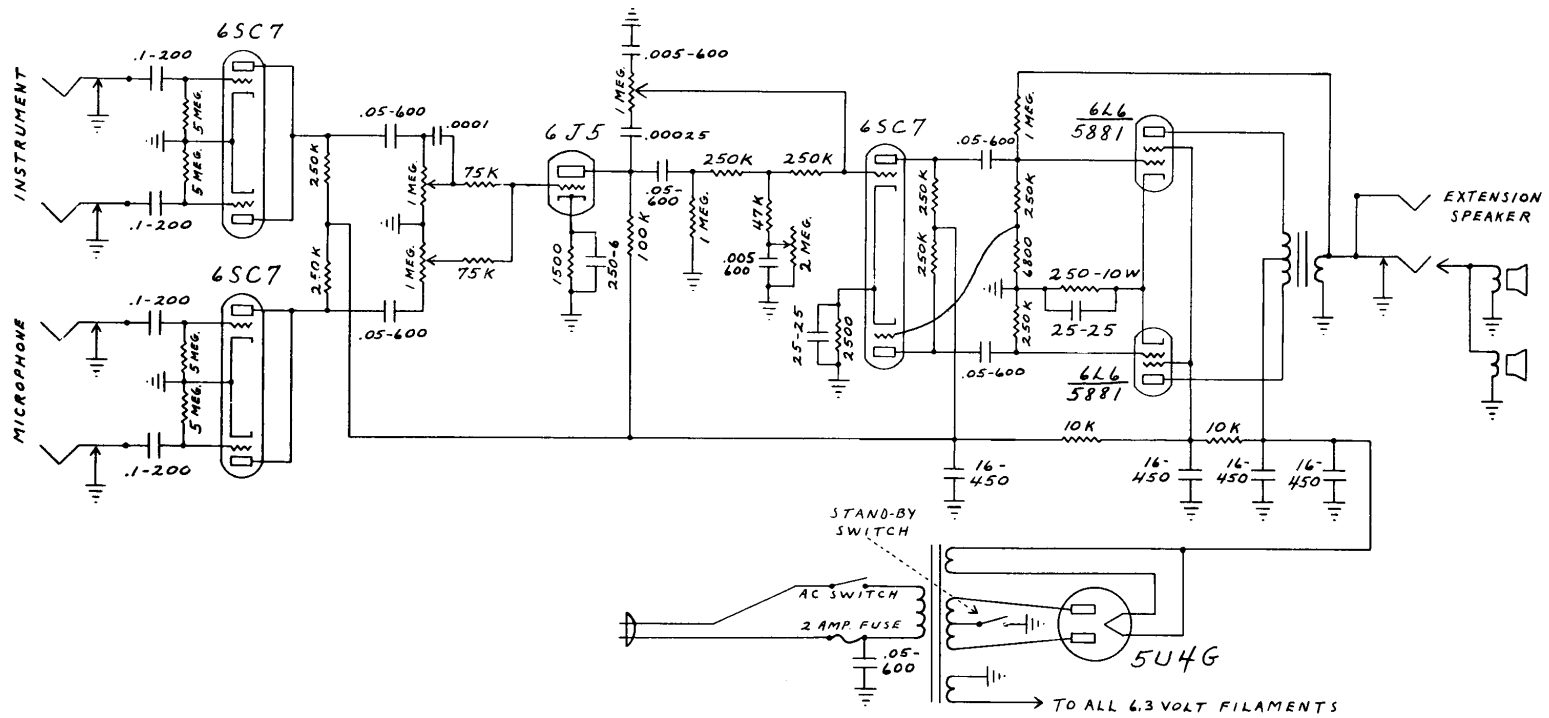
## MODEL 5C8

NOTICE ALL VOLTAGES  
READ TO GROUND WITH ELECTRONIC  
VOLTMETER. VALUES SHOWN  $\pm 0\text{--}20\%$



FENDER MUSICAL INSTRUMENTS  
A DIVISION OF COLUMBIA RECORDS DISTRIBUTION CORP.  
SANTA ANA, CALIFORNIA  
U.S.A.

# FENDER "TWIN-AMP" SCHEMATIC MODEL 5C8



FENDER MUSICAL INSTRUMENTS  
A DIVISION OF COLUMBIA RECORDS DISTRIBUTION CORP.  
SANTA ANA, CALIFORNIA  
U.S.A.