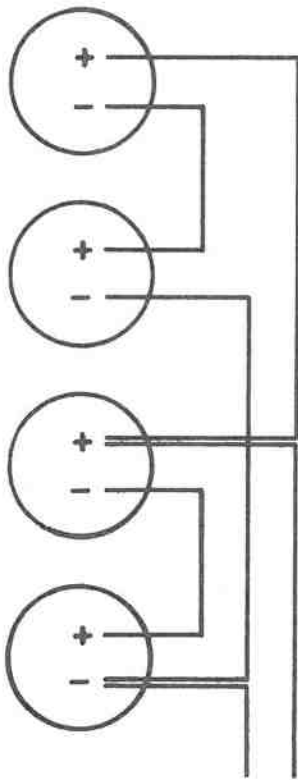


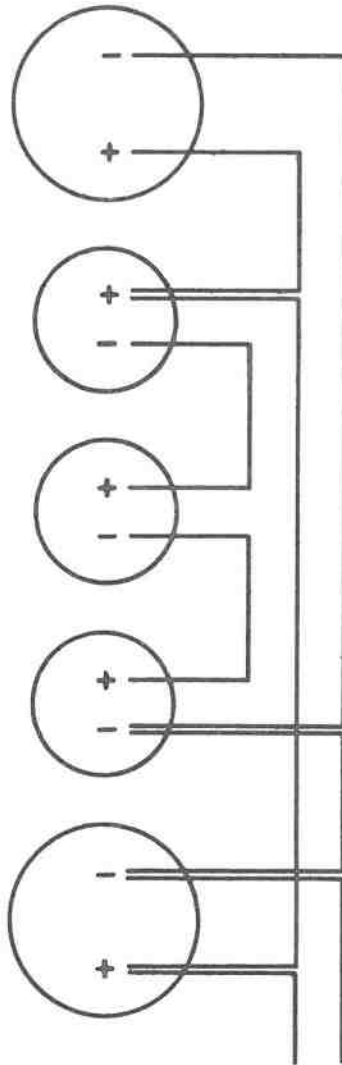
MODEL	SPEAKER		CABINET		FIGURE
	KPN	IMPED.	WIRING	IMPED	
1-15 SC	038-0024-00	8	N/A	8	12
1-15 AB SC	038-0018-00	8	N/A	8	12
1-12 SC	038-5008-00	16	N/A	16	12
2-10 SC	038-0025-00	16	PARALLEL	8	10
4-10 SC	038-0010-00	8	SERIES - PARALLEL	8	11
2-12J SC	038-5008-00	16	PARALLEL	8	10
2-12A SC	038-0009-00	16	PARALLEL	8	10
2-12 B*	038-0007-00	12	PARALLEL	6	10
2-15 B*	038-0024-00	8	PARALLEL	4	10
3-15 B*	038-0024-00	8	PARALLEL	2.7	13
2-15 AB*	038-0018-00	8	PARALLEL	4	10
3-15 AB*	038-0018-00	8	PARALLEL	2.7	13
2-D140F*	038-0033-00	8	PARALLEL	4	10
3-D140F*	038-0033-00	8	PARALLEL	2.7	13
1-18B	038-0030-00	3.2	N/A	3.2	12
2-12G	038-5008-00	16	PARALLEL	8	10
1G+1H	038-5028-00	8	PARALLEL	8	4
	038-5031-01	16			
4-12G	038-5008-00	16	PARALLEL	4	9
2-15G*	038-5028-00	8	PARALLEL	4	10
2-15A*	038-0034-00	8	PARALLEL	4	10
2-15L*	038-0032-00	8	PARALLEL	4	10
2G+1H*	038-5028-00	8	PARALLEL	4	14
	038-5031-01	16			
2A+1H*	038-0034-00	8	PARALLEL	4	14
	038-5031-01	16			
2L+1H*	038-0032-00	8	PARALLEL	4	14
	038-5031-01	16			
595 PA	038-0012-00	12	SERIES - PARALLEL	12	1
795 PA	038-0011-00	8	SERIES - PARALLEL	8	1
150 PA	038-0012-00	12	SERIES - PARALLEL	12	1
302/602	038-0012-00	12	SERIES - PARALLEL	6.5	2
	038-5008-00	16			
303/603	038-5028-00	8	PARALLEL	4	14
	038-5031-01	16			
304/604	038-0034-00	8	PARALLEL	4	14
	038-5031-01	16			
305/605	038-0032-00	8	PARALLEL	4	14
	038-5031-01	16			
MONITOR	038-0012-00	12	SERIES - PARALLEL	4	2
	038-0025-00	16			
HORN BOX	038-5031-01	16	N/A	16	
CLUB PA	038-0012-00	12	SERIES - PARALLEL	12	1
CONCERT PA	038-0012-00	12	SERIES - PARALLEL	6	3
2X2-6	038-0025-00	16			
	038-5008-00	16	PARALLEL	4	6
2X1J	038-0025-00	16	PARALLEL	5.3	5
	038-5005-00	16			
422	038-5008-00	16	PARALLEL	4	9
401	038-0011-00	8	SERIES - PARALLEL	4	11

402	038-0025-00	16	PARALLEL	4	9
802	038-0010-00	8	SERIES - PARALLEL	4	8
1628	038-5008-00	16	PARALLEL	4	7
1608	038-0025-00	16	PARALLEL	4	7
X400	038-0025-00	16	PARALLEL	4	9
X420	038-5008-00	16	PARALLEL	4	9
252	038-0004-00	16	PARALLEL	8	10
X250	038-0004-00	16	PARALLEL	8	11
152W	038-0029-00	4	N/A	4	12
X150W	038-0029-00	4	N/A	4	12

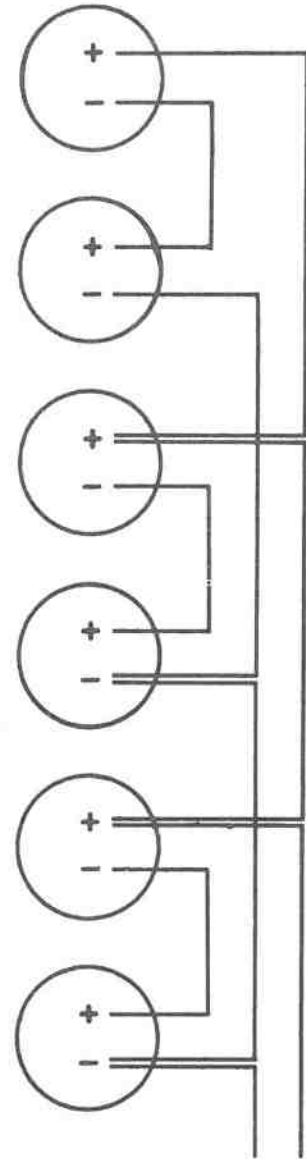
* NOTE: ALL K200-GUITAR AMPS USED - 16 ohm SPEAKERS



1



2

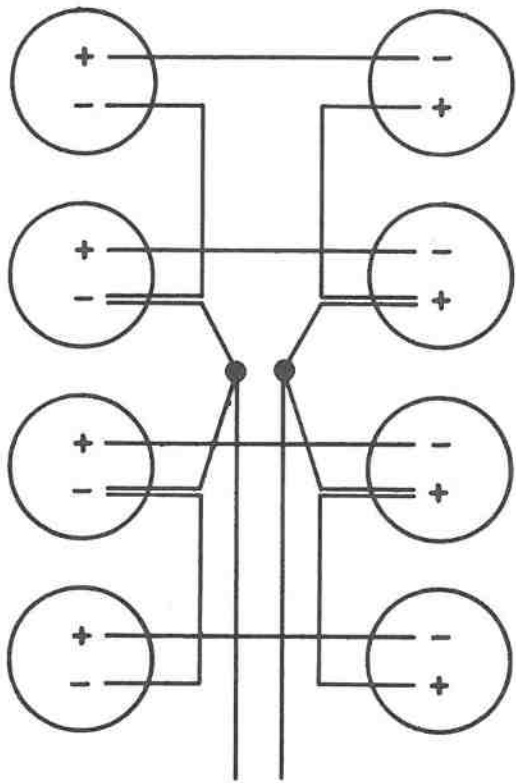


3

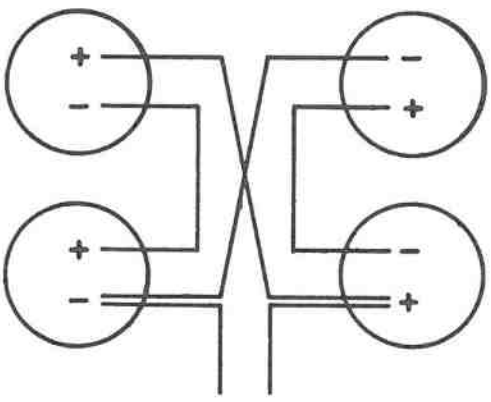
NOTES:

1. ALL SPEAKERS DO NOT HAVE THE SAME POLARITY.
 APPLY 6VDC ACROSS LEADS TO INSURE ALL SPEAKERS
 ARE MOVING SAME DIRECTION PRIOR TO HOOK-UP.

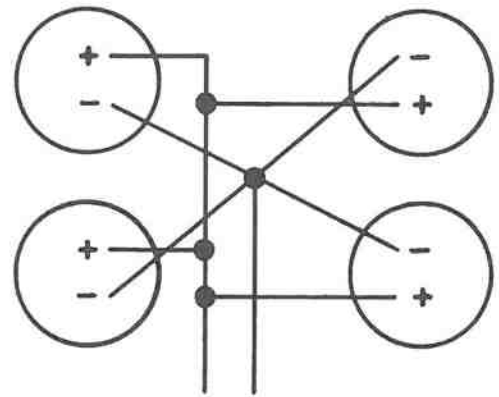
REV C O NO	BY	<i>Kustom</i> ELECTRONICS, INC.		CHANUTE, KANSAS 66720	
		DRN	DATE	TOLERANCES	MATERIAL
		JLS	11-71	NONE	NONE
		CHK	DATE	NAME	
TE	BY	ENGR	SPEAKER WIRING DIAGRAM		
		SCALE	SHT	PART NUMBER	
NO	BY	NONE	1		
			OF 4		



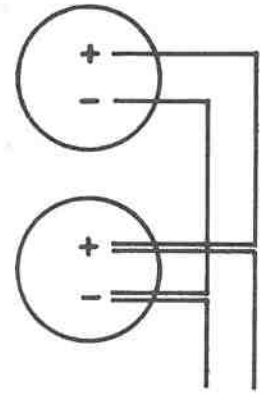
8



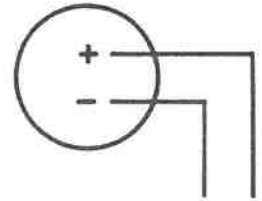
11



9

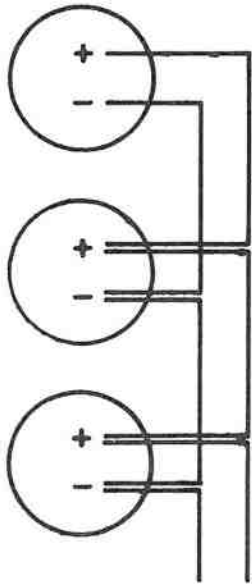


10

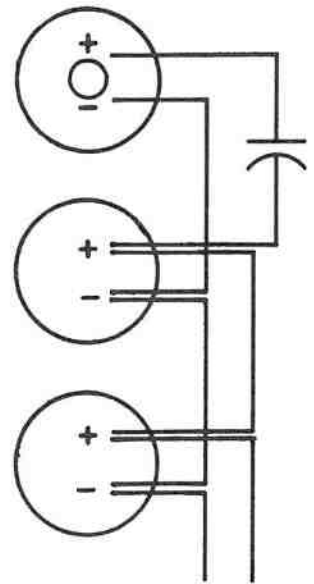


12

BY																				Kustom.	ELECTRONICS, INC.						
DATE																				CHANUTE, KANSAS	66720						
NO																				DRN	JLS	DATE	11-71	TOLERANCES	NONE	MATERIAL	NONE
REV																				CHK		DATE		NAME	SPEAKER WIRING DIAGRAM		
																				ENGR				PART NUMBER			
																				SCALE	NONE	SHT	3				
																						OF	4				



13



14

REV	CON	DATE	BY	<i>Kustom</i> ELECTRONICS, INC.		CHANUTE, KANSAS 66720		
				DRN	JLS	DATE	TOLERANCES	MATERIAL
						11-71	NONE	NONE
				CHK		DATE	NAME	
			ENGR	SPEAKER WIRING DIAGRAM				
			SCALE	SHT	PART NUMBER			
			NONE	4				
				OF				
				4				