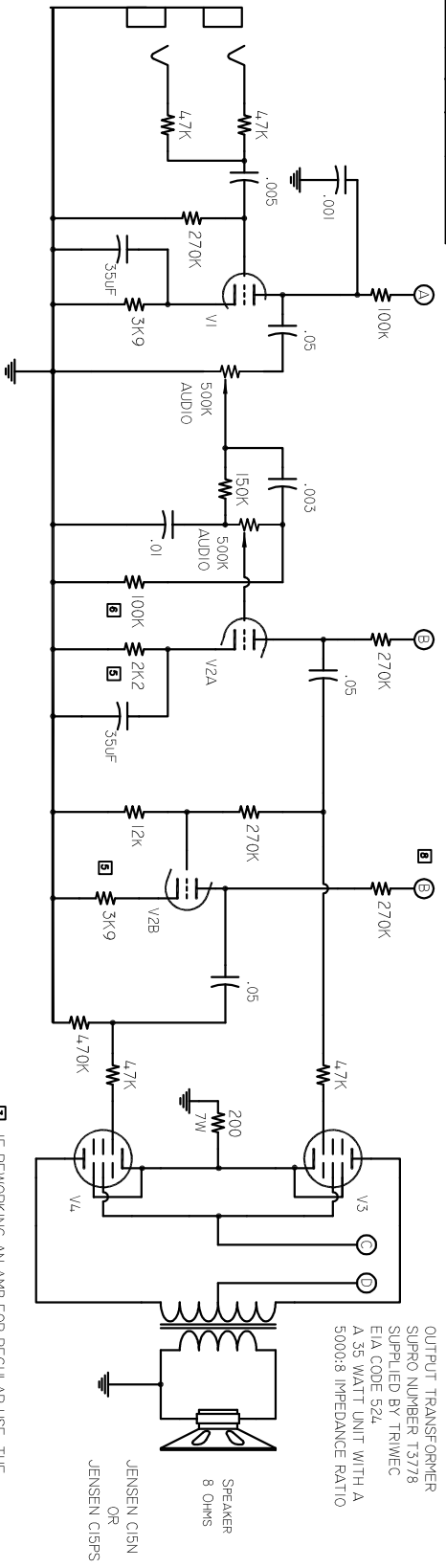


Rev.	Revision note	Date	By
1	ADDED VOLTAGE NOTES	04/05/06	SCW
2	ADDED FILTER CAP NOTE	04/05/06	SCW
3	ADDED CATHODE RES. NOTE	04/05/06	SCW
4	REVISED VOLTAGE ESTIMATES	04/06/06	SCW
5	CORRECTED CATHODE RESISTOR VALUES	04/24/06	SCW
6	CORRECTED RESISTOR VALUE	04/24/06	SCW
7	ADDED NOTE ABOUT SOCKET WIRING	09/13/06	SCW
8	CORRECTED PHASE INVERTER WIRING	11/27/07	SCW

7 USE ONLY 5881, 6L6GB OR 6L6GC TUBES. EL34/6CA7 7027 OR 6550 SHOULD NOT BE USED. OUTPUT TRANSFORMER IMPEDANCE IS NOT CORRECT FOR THESE TUBES. THESE OTHER TUBES MAY ALSO OVERSTRESS THE FILAMENT WINDING OF THE POWER TRANSFORMER.

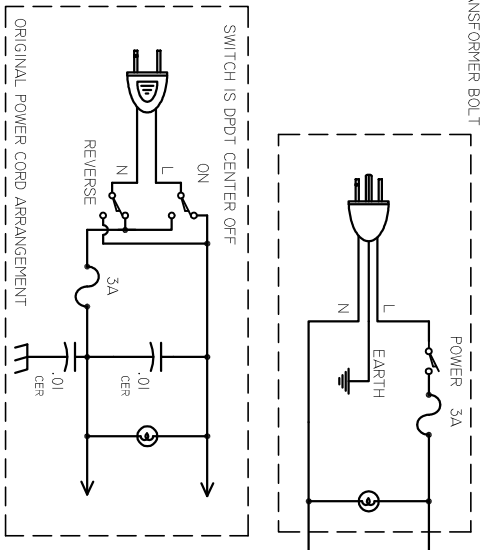


A CURRENT PRODUCTION OUTPUT TRANSFORMER IS THE 40-18061 FROM WWW.CLASSICONE.NET

OUTPUT TRANSFORMER SUPRO NUMBER T3778 SUPPLIED BY TRWEC EIA CODE 52A A 35 WATT UNIT WITH A 5000:8 IMPEDANCE RATIO

8 IF REWORKING AN AMP FOR REGULAR USE, THE BIASING OF THE OUTPUT TUBES SHOULD BE VERIFIED. THE 200 OHM RESISTOR CAN BE EXCHANGED FOR A 220 OR 240 OHM UNIT. INCREASING THE RESISTOR VALUE WILL DECREASE THE HARMONIC RICHNESS OF THE AMPLIFIER OUTPUT, BUT WILL GIVE EXTENDED TUBE LIFE. THE SOUND IS NOTICEABLY COLDER WITH A 240 OHM RESISTOR.

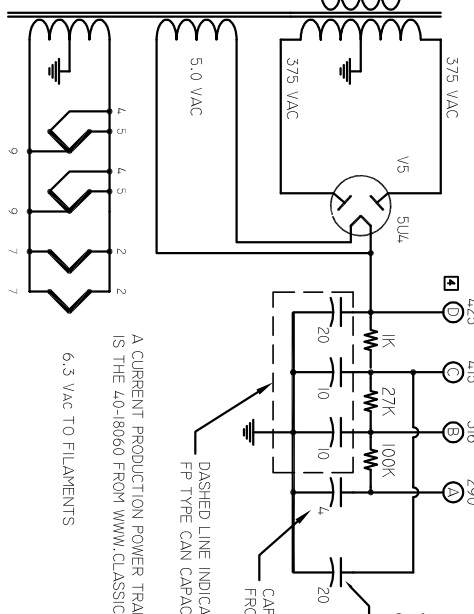
**VOLTAGE MEASUREMENTS BASED ON ESTIMATES NOT MEASURED DATA **
SEVERAL PEOPLE HAVE REPORTED GREATLY DIFFERENT VALUES, ESPECIALLY IN THE PREAMP
VOLTAGE MEASUREMENTS ARE ± 20%



VOLTAGE CHART

VALUES BY MIKE SCARVELLIS

1	2	3	4	5	6	7	8	9
12AX7	247	0	2.2	3.3AC	3.3AC	-	-	3.3AC
12AX7	210	0	2.0	3.3AC	172	0	1.5	3.3AC
6L6GC	-	3.3AC	415	412	0.35	-	3.3AC	31.5
6L6GC	-	3.3AC	415	412	0.35	-	3.3AC	31.5



A CURRENT PRODUCTION POWER TRANSFORMER IS THE 40-18060 FROM WWW.CLASSICONE.NET
6.3 VAC TO FILAMENTS

VOLTAGE MEASUREMENTS TAKEN WITH 125VAC LINE POWER ORIGINAL AMPS DESIGNED FOR 117VAC LINE POWER
THIS CAPACITOR INSIDE AMPLIFIER CHASSIS 30uF IN SOME MODELS
CAPACITOR VALUE REPORTED FROM 8uF DOWN TO 0.1uF
DASHED LINE INDICATES MULTISECTION FP TYPE CAN CAPACITOR

NOTES: V1 (12AX7) ONE TRIODE LEFT UNUSED
CAPACITOR VALUES IN uF
FILTER CAPACITORS ARE 450 V
VOLTAGE MEASUREMENTS DC UNLESS SPECIFIED

THE 1964 AND 1965 MODELS WERE COVERED IN A BLUE MATERIAL AND FEATURED A TUBE RECTIFIER THE 1966 MODEL WAS COVERED IN BLACK AND HAD A SOLID STATE RECTIFIER FITTED AFTER MID YEAR. THE S6420 THUNDERBOLT WAS DISCONTINUED SOMETIME IN 1967. THE S6920 MODEL IS GREATLY DIFFERENT.

MANY THANKS TO GREG SIMON, CJ POLLUS, URIAH THERIAULT, JIM MITCHELL AND MIKE SCARVIN FOR THEIR ASSISTANCE IN GATHERING THIS INFORMATION

Simon

Weatherford Amplifiers

SCALE: NONE

DATE: 12/25/2013

DRAWN BY: S. WEATHERFORD

THIS SCHEMATIC REDRAWN FROM A VERSION PROVIDED BY SCHEMATIC HEAVEN. WEATHERFORD AMPLIFIERS CLAIMS NO RIGHTS TO ANY OF THE INFORMATION CONTAINED IN THIS DRAWING. THE QUALITY OF THE ORIGINAL WAS POOR AND SOME VALUES WERE DIFFICULT TO DETERMINE.

1965 SUPRO THUNDERBOLT

DRAWING NUMBER S6420-TR